

For Research Use Only

CEP290 Monoclonal antibody, PBS Only



Catalog Number: 67716-1-PBS

Basic Information

Catalog Number: 67716-1-PBS	GenBank Accession Number: BC008641	Purification Method: Protein A purification
Size: 100ug , Concentration: 1 mg/ml by Nanodrop;	GeneID (NCBI): 80184	CloneNo.: 2C10G2
Source: Mouse	UNIPROT ID: O15078	
Isotype: IgG2b	Full Name: centrosomal protein 290kDa	
Immunogen Catalog Number: AG17457	Calculated MW: 2479 aa, 290 kDa	
	Observed MW: 290 kDa	

Applications

Tested Applications:
WB, Indirect ELISA

Species Specificity:
Human, rat, mouse

Background Information

Studies in the Chlamydomonas model system has shown that the ciliary protein CEP290 is a critical component of these Y-link junctions. Additionally, numerous studies have demonstrated that CEP290's function is critical for IFT- in CEP290 knockdown experiments, many proteins that would normally localize to the cilium fail to do so, and cilium formation is disrupted or absent. Mutations in CEP290 are accountable for cases of nephronophthisis, Leber congenital amaurosis and Joubert syndrome. In IF analysis of HeLa cells, the white arrows show centrosome and cilium staining. Two isoforms were produced by alternative splicing with predicted MW of 290 and 180 kDa according to UniProt.

Storage

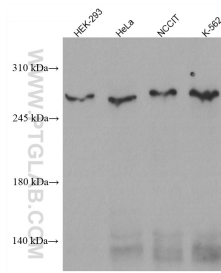
Storage:
Store at -80°C.

Storage Buffer:
PBS Only

For technical support and original validation data for this product please contact:
T: 1 (888) 4PTGLAB (1-888-478-4522) (toll free in USA), or 1(312) 455-8498 (outside USA) E: proteintech@ptglab.com
W: ptglab.com

This product is exclusively available under Proteintech Group brand and is not available to purchase from any other manufacturer.

Selected Validation Data



Various lysates were subjected to SDS PAGE followed by western blot with 67716-1-Ig (CEP290 antibody) at dilution of 1:2000 incubated at room temperature for 1.5 hours. This data was developed using the same antibody clone with 67716-1-PBS in a different storage buffer formulation.