

For Research Use Only

# LAMC1 Monoclonal antibody, PBS Only



Catalog Number: 67706-1-PBS

## Basic Information

<b>Catalog Number:</b> 67706-1-PBS	<b>GenBank Accession Number:</b> BC015586	<b>Purification Method:</b> Protein A purification
<b>Size:</b> 100ug, Concentration: 1 mg/ml by Nanodrop;	<b>GeneID (NCBI):</b> 3915	<b>CloneNo.:</b> 1G2G4
<b>Source:</b> Mouse	<b>UNIPROT ID:</b> P11047	
<b>Isotype:</b> IgG1	<b>Full Name:</b> laminin, gamma 1 (formerly LAMB2)	
<b>Immunogen Catalog Number:</b> AG14674	<b>Calculated MW:</b> 178 kDa	
	<b>Observed MW:</b> 200-220 kDa	

## Applications

**Tested Applications:**  
WB, IF, ELISA

**Species Specificity:**  
Human, Pig, Rat

## Storage

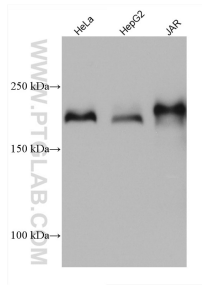
**Storage:**  
Store at -80°C.

**Storage Buffer:**  
PBS only

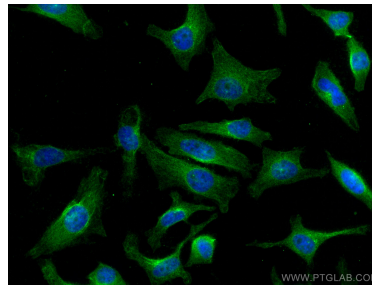
For technical support and original validation data for this product please contact:  
T: 1 (888) 4PTGLAB (1-888-478-4522) (toll free in USA), or 1(312) 455-8498 (outside USA)      E: [proteintech@ptglab.com](mailto:proteintech@ptglab.com)  
W: [ptglab.com](http://ptglab.com)

This product is exclusively available under Proteintech Group brand and is not available to purchase from any other manufacturer.

## Selected Validation Data



Various lysates were subjected to SDS PAGE followed by western blot with 67706-1-Ig (LAMC1 antibody) at dilution of 1:5000 incubated at room temperature for 1.5 hours. This data was developed using the same antibody clone with 67706-1-PBS in a different storage buffer formulation.



Immunofluorescent analysis of (4% PFA) fixed HeLa cells using LAMC1 antibody (67706-1-Ig, Clone: 1G2G4) at dilution of 1:800 and CoraLite®488-Conjugated AffiniPure Goat Anti-Mouse IgG(H+L). This data was developed using the same antibody clone with 67706-1-PBS in a different storage buffer formulation.