

For Research Use Only

# Laminin beta 1 Monoclonal antibody, PBS Only



Catalog Number: 67705-1-PBS

## Basic Information

<b>Catalog Number:</b> 67705-1-PBS	<b>GenBank Accession Number:</b> BC113455	<b>Purification Method:</b> Protein G purification
<b>Size:</b> 100ug, Concentration: 1 mg/ml by Nanodrop;	<b>GeneID (NCBI):</b> 3912	<b>CloneNo.:</b> 1B8E9
<b>Source:</b> Mouse	<b>UNIPROT ID:</b> P07942	
<b>Isotype:</b> IgG1	<b>Full Name:</b> laminin, beta 1	
<b>Immunogen Catalog Number:</b> AG19182	<b>Calculated MW:</b> 1786 aa, 198 kDa	
	<b>Observed MW:</b> 220-240 kDa	

## Applications

**Tested Applications:**  
WB, Indirect ELISA

**Species Specificity:**  
Human, Mouse

## Background Information

Laminins are a family of basement membrane glycoproteins composed of three nonidentical chains, laminin alpha, beta and gamma (formerly A, B1, and B2, respectively) (PMID: 7959779). Laminins contribute to the structure of extracellular matrix and influence the behavior of associated cells, such as adhesion, differentiation, migration, phenotype stability, and resistance to anoikis (PMID: 23057746). Laminin beta 1 (LAMB1) is expressed in most tissues that produce basement membranes, and is one of the 3 chains constituting laminin-1, the first laminin isolated from Engelbreth-Holm-Swarm (EHS) tumor. Laminin beta 1 is also a subunit of laminin-2 (laminin-211 or merosin), laminin-6 (laminin-311 or K-laminin), laminin-8 (laminin-411), laminin-10 (laminin-511) and laminin-12 (laminin-213).

## Storage

**Storage:**  
Store at -80°C.

**Storage Buffer:**  
PBS Only

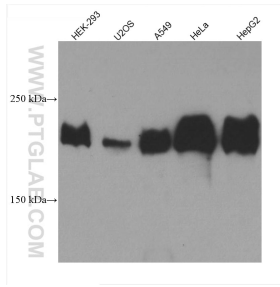
For technical support and original validation data for this product please contact:

T: 1 (888) 4PTGLAB (1-888-478-4522) (toll free  
in USA), or 1(312) 455-8498 (outside USA)

E: [proteintech@ptglab.com](mailto:proteintech@ptglab.com)  
W: [ptglab.com](http://ptglab.com)

This product is exclusively available under Proteintech Group brand and is not available to purchase from any other manufacturer.

## Selected Validation Data



Various lysates were subjected to SDS PAGE followed by western blot with 67705-1-Ig (LAMB1 antibody) at dilution of 1:5000 incubated at room temperature for 1.5 hours. This data was developed using the same antibody clone with 67705-1-PBS in a different storage buffer formulation.