

For Research Use Only

# SLC6A12 Monoclonal antibody, PBS Only



Catalog Number: 67700-1-PBS

## Basic Information

<b>Catalog Number:</b> 67700-1-PBS	<b>GenBank Accession Number:</b> BC126215	<b>Purification Method:</b> Protein A purification
<b>Size:</b> 100ug, Concentration: 1 mg/ml by Nanodrop;	<b>GeneID (NCBI):</b> 6539	<b>CloneNo.:</b> 2C1G4
<b>Source:</b> Mouse	<b>UNIPROT ID:</b> P48065	
<b>Isotype:</b> IgG2a	<b>Full Name:</b> solute carrier family 6 (neurotransmitter transporter, betaine/GABA), member 12	
<b>Immunogen Catalog Number:</b> AG18962	<b>Calculated MW:</b> 614 aa, 69 kDa	
	<b>Observed MW:</b> 70 kDa	

## Applications

**Tested Applications:**  
WB, IF, Indirect ELISA

**Species Specificity:**  
Human, Mouse, Rat

## Storage

**Storage:**  
Store at -80°C.

**Storage Buffer:**  
PBS Only

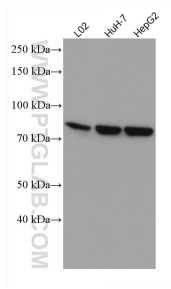
For technical support and original validation data for this product please contact:

T: 1 (888) 4PTGLAB (1-888-478-4522) (toll free in USA), or 1(312) 455-8498 (outside USA)

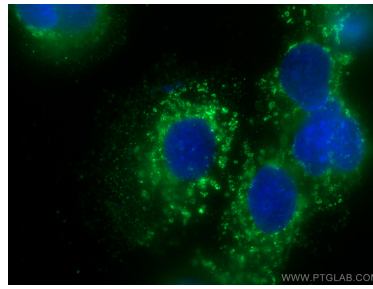
E: [proteintech@ptglab.com](mailto:proteintech@ptglab.com)  
W: [ptglab.com](http://ptglab.com)

This product is exclusively available under Proteintech Group brand and is not available to purchase from any other manufacturer.

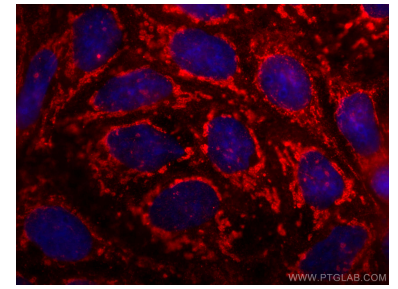
## Selected Validation Data



Various lysates were subjected to SDS PAGE followed by western blot with 67700-1-Ig (SLC6A12 antibody) at dilution of 1:2000 incubated at room temperature for 1.5 hours. This data was developed using the same antibody clone with 67700-1-PBS in a different storage buffer formulation.



Immunofluorescent analysis of (-20°C Methanol) fixed Caco-2 cells using SLC6A12 antibody (67700-1-Ig, Clone: 2C1G4 ) at dilution of 1:400 and CoraLite®488-Conjugated AffiniPure Goat Anti-Mouse IgG(H+L). This data was developed using the same antibody clone with 67700-1-PBS in a different storage buffer formulation.



Immunofluorescent analysis of (-20°C Ethanol) fixed Caco-2 cells using SLC6A12 antibody (67700-1-Ig, Clone: 2C1G4 ) at dilution of 1:800 and CoraLite®594-Conjugated AffiniPure Goat Anti-Mouse IgG(H+L). This data was developed using the same antibody clone with 67700-1-PBS in a different storage buffer formulation.