

For Research Use Only

NXT1 Monoclonal antibody, PBS Only

Catalog Number: 67680-1-PBS



Basic Information

Catalog Number: 67680-1-PBS	GenBank Accession Number: BC000759	Purification Method: Protein A purification
Size: 100ug , Concentration: 1 mg/ml by Nanodrop;	GeneID (NCBI): 29107	CloneNo.: 2C10A2
Source: Mouse	UNIPROT ID: Q9UJK6	
Isotype: IgG2a	Full Name: NTF2-like export factor 1	
Immunogen Catalog Number: AG30039	Calculated MW: 15 kDa	
	Observed MW: 15 kDa	

Applications

Tested Applications:
WB, IF, Indirect ELISA

Species Specificity:
Human, mouse, rat

Background Information

NXT1 is located in the nuclear envelope and is homologous to nuclear transport factor 2. NXT1 functions as a nuclear export factor in both RAN (Ras-related nuclear protein)- and CRM1 (required for chromosome region maintenance)-dependent pathways. It is found to stimulate the export of U1 snRNA in RAN- and CRM1-dependent pathways and the export of tRNA and mRNA in a CRM1-independent pathway. NXT1 also heterodimerizes with Tap protein and regulates the ability of Tap protein to mediate nuclear mRNA export.

Storage

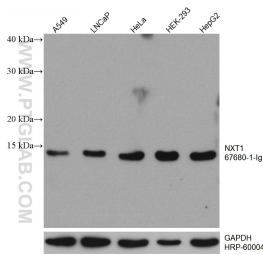
Storage:
Store at -80°C.

Storage Buffer:
PBS Only

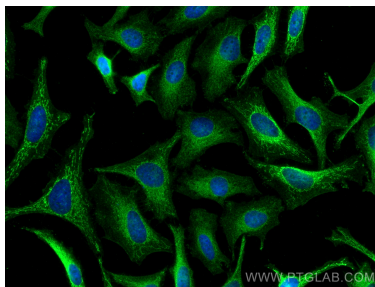
For technical support and original validation data for this product please contact:
T: 1 (888) 4PTGLAB (1-888-478-4522) (toll free in USA), or 1(312) 455-8498 (outside USA)
E: proteintech@ptglab.com
W: ptglab.com

This product is exclusively available under Proteintech Group brand and is not available to purchase from any other manufacturer.

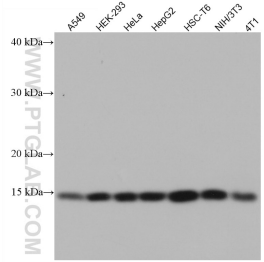
Selected Validation Data



Various lysates were subjected to SDS PAGE followed by western blot with 67680-1-Ig (NXT1 antibody) at dilution of 1:10000 incubated at room temperature for 1.5 hours. The membrane was stripped and reblotted with HRP-conjugated GAPDH Monoclonal antibody (HRP-60004) as loading control. This data was developed using the same antibody clone with 67680-1-PBS in a different storage buffer formulation.



Immunofluorescent analysis of (4% PFA) fixed HeLa cells using NXT1 antibody (67680-1-Ig, Clone: 2C10A2) at dilution of 1:400 and CoraLite®488-Conjugated AffiniPure Goat Anti-Mouse IgG(H+L). This data was developed using the same antibody clone with 67680-1-PBS in a different storage buffer formulation.



Various lysates were subjected to SDS PAGE followed by western blot with 67680-1-Ig (NXT1 antibody) at dilution of 1:4000 incubated at room temperature for 1.5 hours. This data was developed using the same antibody clone with 67680-1-PBS in a different storage buffer formulation.