

For Research Use Only

Mouse Ins1 Monoclonal antibody, PBS Only

Catalog Number: 67668-1-PBS



Basic Information

Catalog Number: 67668-1-PBS	GenBank Accession Number: NM_008386	Purification Method: Protein A purification
Size: 100ug , Concentration: 1mg/ml by Nanodrop;	GeneID (NCBI): 16333	CloneNo.: 1H2C11
Source: Mouse	UNIPROT ID: P01325	
Isotype: IgG1	Full Name: insulin I	
Immunogen Catalog Number: AG29988	Calculated MW: 12 kDa	

Applications

Tested Applications:
IHC, IF-P, Indirect ELISA

Species Specificity:
mouse, rat

Background Information

insulin I is a peptide hormone that plays a vital role in the regulation of carbohydrate and lipid metabolism. The encoded precursor protein undergoes proteolytic cleavage to produce a disulfide-linked heterodimeric functional protein that is stored in secretory granules. An increase in blood glucose levels, among others, induces the release of insulin from the secretory granules. Mice deficient in the functional hormone encoded by this gene develop diabetes mellitus.

Storage

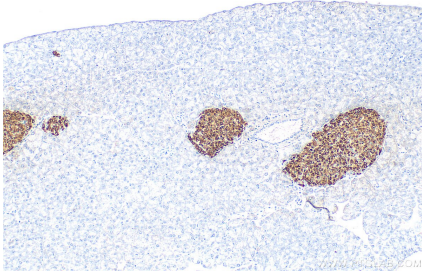
Storage:
Store at -80°C.

Storage Buffer:
PBS Only

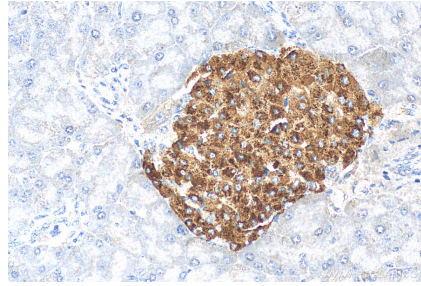
For technical support and original validation data for this product please contact:
T: 1 (888) 4PTGLAB (1-888-478-4522) (toll free in USA), or 1(312) 455-8498 (outside USA) E: proteintech@ptglab.com
W: ptglab.com

This product is exclusively available under Proteintech Group brand and is not available to purchase from any other manufacturer.

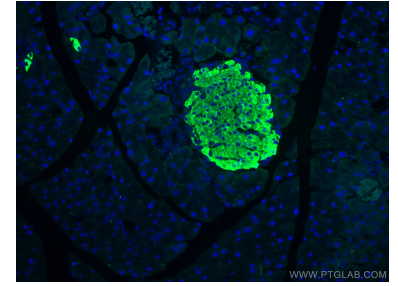
Selected Validation Data



Immunohistochemical analysis of paraffin-embedded mouse pancreas tissue slide using 67668-1-Ig (Ins1 antibody) at dilution of 1:5000 (under 10x lens). Heat mediated antigen retrieval with Tris-EDTA buffer (pH 9.0). This data was developed using the same antibody clone with 67668-1-PBS in a different storage buffer formulation.



Immunohistochemical analysis of paraffin-embedded mouse pancreas tissue slide using 67668-1-Ig (Ins1 antibody) at dilution of 1:5000 (under 40x lens). Heat mediated antigen retrieval with Tris-EDTA buffer (pH 9.0). This data was developed using the same antibody clone with 67668-1-PBS in a different storage buffer formulation.



Immunofluorescent analysis of (4% PFA) fixed mouse pancreas tissue using Ins1 antibody (67668-1-Ig, Clone: 1H2C11) at dilution of 1:200 and CoraLite®488-Conjugated AffiniPure Goat Anti-Mouse IgG(H+L). This data was developed using the same antibody clone with 67668-1-PBS in a different storage buffer formulation.