

For Research Use Only

# ETF A Monoclonal antibody, PBS Only

Catalog Number: 67661-1-PBS



## Basic Information

<b>Catalog Number:</b> 67661-1-PBS	<b>GenBank Accession Number:</b> BC015526	<b>Purification Method:</b> Protein A purification
<b>Size:</b> 100ug , Concentration: 1 mg/ml by Nanodrop;	<b>GeneID (NCBI):</b> 2108	<b>CloneNo.:</b> 3C12G5
<b>Source:</b> Mouse	<b>UNIPROT ID:</b> P13804	
<b>Isotype:</b> IgG2a	<b>Full Name:</b> electron-transfer-flavoprotein, alpha polypeptide	
<b>Immunogen Catalog Number:</b> AG30257	<b>Calculated MW:</b> 30 kDa	
	<b>Observed MW:</b> 30 kDa	

## Applications

**Tested Applications:**  
WB, IF, IHC, Indirect ELISA

**Species Specificity:**  
Human, mouse, rat, pig

## Background Information

The electron transfer flavoprotein(ETF), located in the mitochondrial matrix, is a nuclear-encoded enzyme delivering to the respiratory chain by straight-chain acyl-CoA dehydrogenases and other dehydrogenases. Mitochondrial fatty acids oxidation and amino acids metabolism are affected in MADD(Multiple acyl-CoA dehydrogenase deficiency). These disorders are linked to a dysfunction of ETF. ETF is a mitochondrial matrix protein consisting of alpha- (30kDa) and beta- (28kDa) subunits encoded by the ETF A and ETF B genes, respectively. (PMID: 31996215, PMID: 16510302)

## Storage

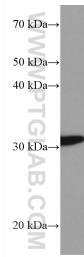
**Storage:**  
Store at -80°C.

**Storage Buffer:**  
PBS Only

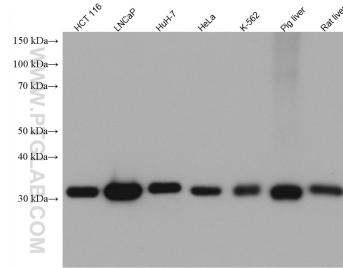
For technical support and original validation data for this product please contact:  
T: 1 (888) 4PTGLAB (1-888-478-4522) (toll free in USA), or 1(312) 455-8498 (outside USA)  
E: proteintech@ptglab.com  
W: ptglab.com

This product is exclusively available under Proteintech Group brand and is not available to purchase from any other manufacturer.

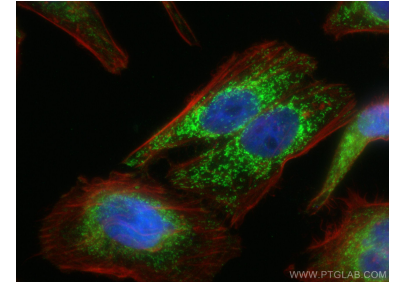
## Selected Validation Data



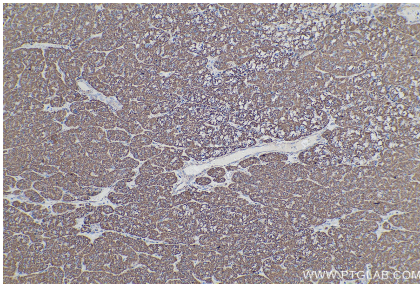
mouse brain tissue were subjected to SDS PAGE followed by western blot with 67661-1-Ig (ETFA antibody) at dilution of 1:10000 incubated at room temperature for 1.5 hours. This data was developed using the same antibody clone with 67661-1-PBS in a different storage buffer formulation.



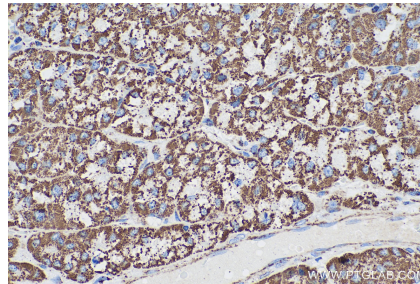
Various lysates were subjected to SDS PAGE followed by western blot with 67661-1-Ig (ETFA antibody) at dilution of 1:10000 incubated at room temperature for 1.5 hours. This data was developed using the same antibody clone with 67661-1-PBS in a different storage buffer formulation.



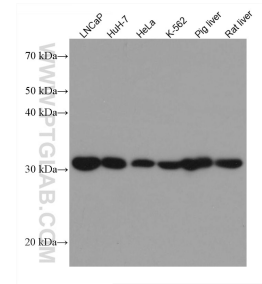
Immunofluorescent analysis of (4% PFA) fixed HepG2 cells using ETFA antibody (67661-1-Ig, Clone: 3C12G5) at dilution of 1:400 and CoraLite®488-Conjugated AffiniPure Goat Anti-Mouse IgG(H+L), CL594-Phalloidin (red). DAPI (blue). This data was developed using the same antibody clone with 67661-1-PBS in a different storage buffer formulation.



Immunohistochemical analysis of paraffin-embedded human liver cancer tissue slide using 67661-1-Ig (ETFA antibody) at dilution of 1:16000 (under 10x lens). Heat mediated antigen retrieval with Tris-EDTA buffer (pH 9.0). This data was developed using the same antibody clone with 67661-1-PBS in a different storage buffer formulation.



Immunohistochemical analysis of paraffin-embedded human liver cancer tissue slide using 67661-1-Ig (ETFA antibody) at dilution of 1:16000 (under 40x lens). Heat mediated antigen retrieval with Tris-EDTA buffer (pH 9.0). This data was developed using the same antibody clone with 67661-1-PBS in a different storage buffer formulation.



Various lysates were subjected to SDS PAGE followed by western blot with 67661-1-Ig (ETFA antibody) at dilution of 1:10000 incubated at room temperature for 1.5 hours. This data was developed using the same antibody clone with 67661-1-PBS in a different storage buffer formulation.