

For Research Use Only

UBC9-Specific Monoclonal antibody, PBS Only



Catalog Number: 67660-1-PBS

Basic Information

Catalog Number: 67660-1-PBS	GenBank Accession Number: NM_003345	Purification Method: Protein G purification
Size: 100ug, Concentration: 1 mg/ml by Nanodrop;	GeneID (NCBI): 7329	CloneNo.: 1G8A2
Source: Mouse	UNIPROT ID: P63279	
Isotype: IgG1	Full Name: ubiquitin-conjugating enzyme E2 (UBC9 homolog, yeast)	
	Calculated MW: 18 kDa	
	Observed MW: 18 kDa	

Applications

Tested Applications:
WB, Indirect ELISA

Species Specificity:
Human, mouse, rat

Background Information

UBC9 is also named as UBE2L, UBCE9 and belongs to the ubiquitin-conjugating enzyme family. It is a homologue of the E2 ubiquitin conjugating enzyme and participates in the covalent linking of SUMO-1 molecule to the target protein. This protein is present at a high level in spleen and lung. Moderate level of UBC9 is detected in kidney and liver. Low amount of UBC9 is observed in brain, whereas the 18 kDa band of UBC9 is barely visible or absent in heart and skeletal muscle. In heart and muscle extracts the UBC9 antibodies recognizes a 38 kDa protein band, but this band is not visible in extracts of other rat tissues (PMID:14739995).

Storage

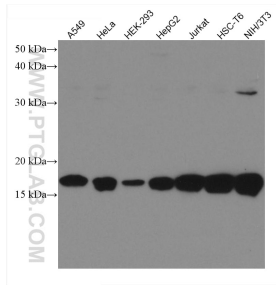
Storage:
Store at -80°C.

Storage Buffer:
PBS Only

For technical support and original validation data for this product please contact:
T: 1 (888) 4PTGLAB (1-888-478-4522) (toll free in USA), or 1(312) 455-8498 (outside USA) E: proteintech@ptglab.com
W: ptglab.com

This product is exclusively available under Proteintech Group brand and is not available to purchase from any other manufacturer.

Selected Validation Data



Various lysates were subjected to SDS PAGE followed by western blot with 67660-1-Ig (UBC9-Specific antibody) at dilution of 1:10000 incubated at room temperature for 1.5 hours. This data was developed using the same antibody clone with 67660-1-PBS in a different storage buffer formulation.