

For Research Use Only

# NCAPH Monoclonal antibody, PBS Only



Catalog Number: 67655-1-PBS

Featured Product

## Basic Information

<b>Catalog Number:</b> 67655-1-PBS	<b>GenBank Accession Number:</b> BC024211	<b>Purification Method:</b> Protein A purification
<b>Size:</b> 100ug, Concentration: 1 mg/ml by Nanodrop;	<b>GeneID (NCBI):</b> 23397	<b>CloneNo.:</b> 3D2F11
<b>Source:</b> Mouse	<b>UNIPROT ID:</b> Q15003	
<b>Isotype:</b> IgG1	<b>Full Name:</b> non-SMC condensin I complex, subunit H	
<b>Immunogen Catalog Number:</b> AG27748	<b>Calculated MW:</b> 741 aa, 83 kDa	
	<b>Observed MW:</b> 83-100 kDa	

## Applications

**Tested Applications:**  
WB, IF, IHC, ELISA

**Species Specificity:**  
Human, mouse, rat

## Background Information

Non-SMC condensin I complex subunit H (NCAPH) is one of the three non-SMC subunits in condensin I, which belongs to a recently defined superfamily of proteins termed kleisins. Another two non-SMC subunits, CAP-D2 and CAP-G, share a highly degenerate repeating motif known as HEAT repeat. Some studies show that each subunit is essential for viability and plays an important role in mitotic chromosome architecture and segregation. In recent years, researchers found that the high expression of NCAPH was associated with poor prognosis in patients with non-small cell lung cancer and prostate cancer. Downregulation of NCAPH inhibited the proliferation, migration, and invasion of several cancer cells significantly. Moreover, NCAPH was involved in the regulation of mature chromosome condensation and DNA damage. These data suggest that NCAPH may be a key carcinogen involved in the development and progression of human malignant tumors. ( PMID: 28300828, PMID: 33311486 )

## Storage

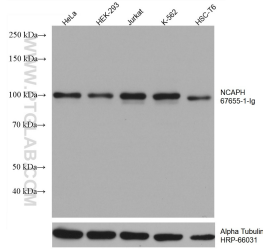
**Storage:**  
Store at -80°C.

**Storage Buffer:**  
PBS only

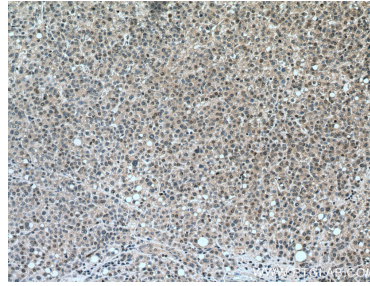
For technical support and original validation data for this product please contact:  
T: 1 (888) 4PTGLAB (1-888-478-4522) (toll free in USA), or 1(312) 455-8498 (outside USA)      E: proteintech@ptglab.com  
W: ptglab.com

This product is exclusively available under Proteintech Group brand and is not available to purchase from any other manufacturer.

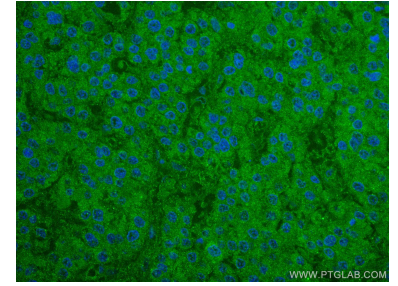
## Selected Validation Data



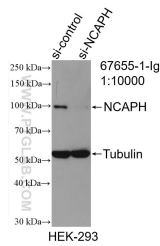
Various lysates were subjected to SDS PAGE followed by western blot with 67655-1-Ig (NCAPH antibody) at dilution of 1:20000 incubated at room temperature for 1.5 hours. The membrane was stripped and reblotted with HRP-conjugated Alpha Tubulin Monoclonal antibody (HRP-66031) as loading control. This data was developed using the same antibody clone with 67655-1-PBS in a different storage buffer formulation.



Immunohistochemical analysis of paraffin-embedded human liver cancer tissue slide using 67655-1-Ig (NCAPH antibody) at dilution of 1:1000 (under 10x lens). Heat mediated antigen retrieval with Tris-EDTA buffer (pH 9.0). This data was developed using the same antibody clone with 67655-1-PBS in a different storage buffer formulation.



Immunofluorescent analysis of (4% PFA) fixed human liver cancer tissue using NCAPH antibody (67655-1-Ig, Clone: 3D2F11) at dilution of 1:400 and CoraLite®488-Conjugated AffiniPure Goat Anti-Mouse IgG(H+L). This data was developed using the same antibody clone with 67655-1-PBS in a different storage buffer formulation.



WB result of NCAPH antibody (67655-1-Ig; 1:10000; incubated at room temperature for 1.5 hours) with sh-Control and sh-NCAPH transfected HEK-293 cells. This data was developed using the same antibody clone with 67655-1-PBS in a different storage buffer formulation.