

For Research Use Only

# ANO2 Monoclonal antibody, PBS Only



Catalog Number: 67638-1-PBS

## Basic Information

Catalog Number:

67638-1-PBS

Size:

100ug, Concentration: 1 mg/ml by Nanodrop;

Source:

Mouse

Isotype:

IgG2a

GenBank Accession Number:

NM\_020373

GeneID (NCBI):

57101

UNIPROT ID:

Q9NQ90

Full Name:

anoctamin 2

Calculated MW:

114 kDa

Observed MW:

114 kDa

Purification Method:

Protein A purification

CloneNo.:

2F12G1

## Applications

Tested Applications:

WB, IF, IHC, Indirect ELISA

Species Specificity:

Human, mouse

## Background Information

ANO2, also named as C12orf3 and TMEM16B, belongs to the anoctamin family. It acts as a calcium-activated chloride channel (CaCC), mostly in photoreceptors. It may mediate olfactory amplification in olfactory sensory neurons (OSNs) and light perception amplification in retina.

## Storage

Storage:

Store at -80°C.

Storage Buffer:

PBS Only

For technical support and original validation data for this product please contact:

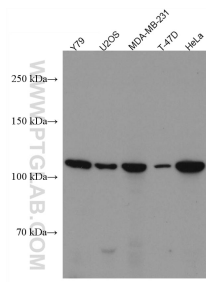
T: 1 (888) 4PTGLAB (1-888-478-4522) (toll free in USA), or 1(312) 455-8498 (outside USA)

E: [proteintech@ptglab.com](mailto:proteintech@ptglab.com)

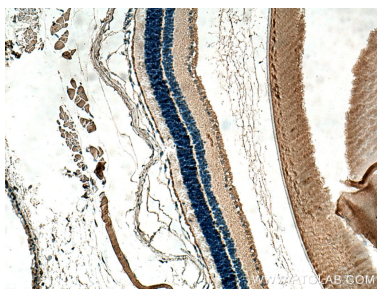
W: [ptglab.com](http://ptglab.com)

This product is exclusively available under Proteintech Group brand and is not available to purchase from any other manufacturer.

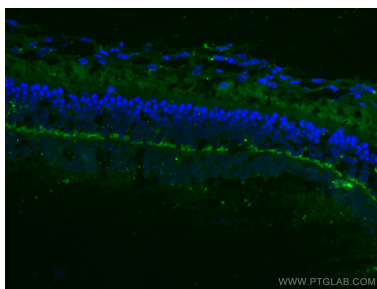
## Selected Validation Data



Various lysates were subjected to SDS PAGE followed by western blot with 67638-1-Ig (ANO2 antibody) at dilution of 1:3000 incubated at room temperature for 1.5 hours. This data was developed using the same antibody clone with 67638-1-PBS in a different storage buffer formulation.



Immunohistochemical analysis of paraffin-embedded mouse eye tissue slide using 67638-1-Ig (ANO2 antibody) at dilution of 1:200 (under 10x lens). Heat mediated antigen retrieval with Tris-EDTA buffer (pH 9.0). This data was developed using the same antibody clone with 67638-1-PBS in a different storage buffer formulation.



Immunofluorescent analysis of (4% PFA) fixed mouse eye tissue using ANO2 antibody (67638-1-Ig, Clone: 2F12G1 ) at dilution of 1:400 and CoraLite®488-Conjugated AffiniPure Goat Anti-Mouse IgG(H+L). This data was developed using the same antibody clone with 67638-1-PBS in a different storage buffer formulation.