

For Research Use Only

# PSME3 Monoclonal antibody, PBS Only



Catalog Number: 67629-1-PBS

## Basic Information

Catalog Number:

67629-1-PBS

Size:

100ug, Concentration: 1 mg/ml by Nanodrop;

Source:

Mouse

Isotype:

IgG1

Immunogen Catalog Number:

AG6716

GenBank Accession Number:

BC001423

GeneID (NCBI):

10197

UNIPROT ID:

P61289

Full Name:

proteasome (prosome, macropain) activator subunit 3 (PA28 gamma; Ki)

Calculated MW:

30 kDa

Observed MW:

32 kDa

Purification Method:

Protein A purification

CloneNo.:

2A8E8

## Applications

Tested Applications:

WB, IHC, ELISA

Species Specificity:

Human, Rat

## Background Information

PSME3 gene encodes proteasome activator complex subunit 3, which is also called REG-gamma or PA28-gamma. REG-gamma activates the trypsin-like catalytic subunit of the proteasome thus is a proteasome regulator. MDM2-TP53 interaction which promotes ubiquitination- and MDM2-dependent proteasomal degradation of TP53, may be promoted by REG-gamma resulting in inhibited apoptosis after DNA damage. REG-gamma may also be involved in cell cycle regulation.

## Storage

Storage:

Store at -80°C.

Storage Buffer:

PBS only

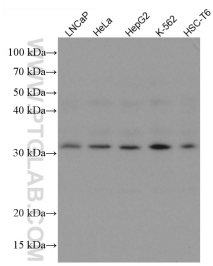
For technical support and original validation data for this product please contact:

T: 1 (888) 4PTGLAB (1-888-478-4522) (toll free in USA), or 1(312) 455-8498 (outside USA)

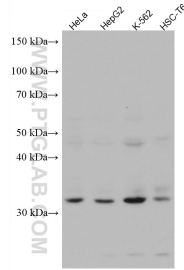
E: [proteintech@ptglab.com](mailto:proteintech@ptglab.com)  
W: [ptglab.com](http://ptglab.com)

This product is exclusively available under Proteintech Group brand and is not available to purchase from any other manufacturer.

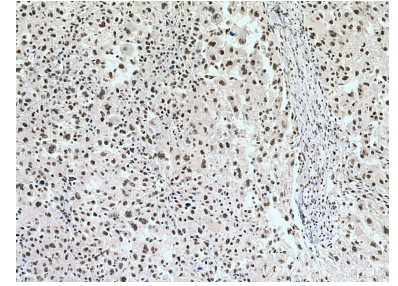
## Selected Validation Data



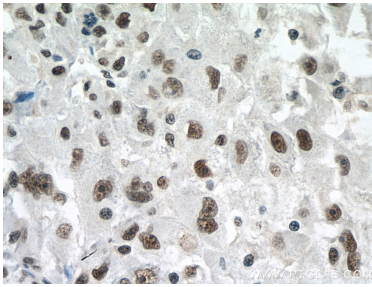
Various lysates were subjected to SDS PAGE followed by western blot with 67629-1-Ig (PSME3 antibody) at dilution of 1:3000 incubated at room temperature for 1.5 hours. This data was developed using the same antibody clone with 67629-1-PBS in a different storage buffer formulation.



Various lysates were subjected to SDS PAGE followed by western blot with 67629-1-Ig (PSME3 antibody) at dilution of 1:10000 incubated at room temperature for 1.5 hours. This data was developed using the same antibody clone with 67629-1-PBS in a different storage buffer formulation.



Immunohistochemical analysis of paraffin-embedded human liver cancer tissue slide using 67629-1-Ig (PSME3 antibody) at dilution of 1:500 (under 10x lens). Heat mediated antigen retrieval with Tris-EDTA buffer (pH 9.0). This data was developed using the same antibody clone with 67629-1-PBS in a different storage buffer formulation.



Immunohistochemical analysis of paraffin-embedded human liver cancer tissue slide using 67629-1-Ig (PSME3 antibody) at dilution of 1:500 (under 40x lens). Heat mediated antigen retrieval with Tris-EDTA buffer (pH 9.0). This data was developed using the same antibody clone with 67629-1-PBS in a different storage buffer formulation.