

For Research Use Only

# Bovine Bovine IgG Monoclonal antibody, PBS Only



Catalog Number: 67615-1-PBS

## Basic Information

Catalog Number:

67615-1-PBS

Size:

100ug, Concentration: 1 mg/ml by Nanodrop;

Source:

Mouse

Isotype:

IgG2a

GenBank Accession Number:

GeneID (NCBI):

Full Name:

Observed MW:

55 kDa

Purification Method:

Protein A purification

CloneNo.:

1C5C5

## Applications

Tested Applications:

WB, Indirect ELISA

Species Specificity:

bovine

## Background Information

Bovine IgG is named as BGG, bovine IgG heavy chain. This antibody can recognize heavy chain of bovine IgG.

## Storage

Storage:

Store at -80°C.

Storage Buffer:

PBS Only

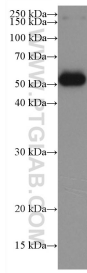
For technical support and original validation data for this product please contact:

T: 1 (888) 4PTGLAB (1-888-478-4522) (toll free in USA), or 1(312) 455-8498 (outside USA)

E: [proteintech@ptglab.com](mailto:proteintech@ptglab.com)  
W: [ptglab.com](http://ptglab.com)

This product is exclusively available under Proteintech Group brand and is not available to purchase from any other manufacturer.

## Selected Validation Data



62.5 nL fetal bovine serum was subjected to SDS-PAGE followed by western blot with 67615-1-Ig (Bovine IgG antibody) at dilution of 1:10000 incubated at room temperature for 1.5 hours. This data was developed using the same antibody clone with 67615-1-PBS in a different storage buffer formulation.