

For Research Use Only

Chicken Ovalbumin Monoclonal antibody, PBS Only

Catalog Number: 67614-1-PBS



Basic Information

Catalog Number: 67614-1-PBS	GenBank Accession Number: NM_205152	Purification Method: Protein A purification
Size: 100ug , Concentration: 1mg/ml by Nanodrop;	GeneID (NCBI): UNIPROT ID: P01012	CloneNo.: 1D3D5
Source: Mouse	Full Name: Calculated MW: 43 kDa	
Isotype: IgG1	Observed MW: 43 kDa	

Applications

Tested Applications:
WB, Indirect ELISA

Species Specificity:
chicken

Background Information

Ovalbumin, also named as OVA, is a storage protein of egg white. It belongs to the serpin superfamily, but unlike most serpins, it is not a serine protease inhibitor. This antibody is specific to ovalbumin of chicken.

Storage

Storage:
Store at -80°C.
Storage Buffer:
PBS Only

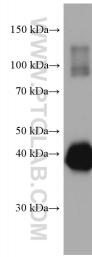
For technical support and original validation data for this product please contact:

T: 1 (888) 4PTGLAB (1-888-478-4522) (toll free in USA), or 1(312) 455-8498 (outside USA)

E: proteintech@ptglab.com
W: ptglab.com

This product is exclusively available under Proteintech Group brand and is not available to purchase from any other manufacturer.

Selected Validation Data



5 nL Chicken egg were subjected to SDS PAGE followed by western blot with 67614-1-Ig (Ovalbumin Antibody) at dilution of 1:100000 incubated at room temperature for 1.5 hours. This data was developed using the same antibody clone with 67614-1-PBS in a different storage buffer formulation.