

For Research Use Only

MYBPC3 Monoclonal antibody, PBS Only



Catalog Number: 67608-1-PBS

Basic Information

Catalog Number: 67608-1-PBS	GenBank Accession Number: BC151211	Purification Method: Protein A purification
Size: 100ug, Concentration: 1 mg/ml by Nanodrop;	GeneID (NCBI): 4607	CloneNo.: 3C8F8
Source: Mouse	UNIPROT ID: Q14896	
Isotype: IgG1	Full Name: myosin binding protein C, cardiac	
Immunogen Catalog Number: AG15848	Calculated MW: 1274 aa, 141 kDa	
	Observed MW: 140-150 kDa	

Applications

Tested Applications:
WB, IF, IHC, Indirect ELISA

Species Specificity:
Human, mouse, rat, pig, rabbit

Background Information

MYBPC3 belongs to the immunoglobulin superfamily and MyBP family. MYBPC3 located in the crossbridge region of vertebrate striated muscle a bands. In vitro it binds MHC, F-actin and native thin filaments, and modifies the activity of actin-activated myosin ATPase. It may modulate muscle contraction or may play a more structural role. Defects in MYBPC3 are the cause of cardiomyopathy familial hypertrophic type 4 (CMH4).

Storage

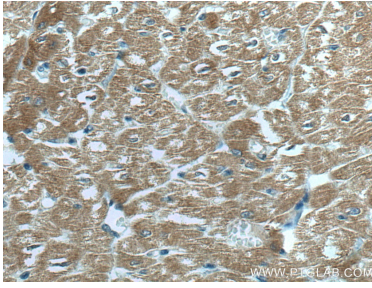
Storage:
Store at -80°C.

Storage Buffer:
PBS Only

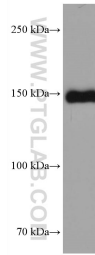
For technical support and original validation data for this product please contact:
T: 1 (888) 4PTGLAB (1-888-478-4522) (toll free in USA), or 1(312) 455-8498 (outside USA) E: proteintech@ptglab.com
W: ptglab.com

This product is exclusively available under Proteintech Group brand and is not available to purchase from any other manufacturer.

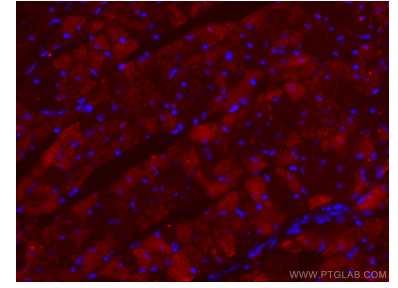
Selected Validation Data



Immunohistochemical analysis of paraffin-embedded human heart tissue slide using 67608-1-Ig (MYBPC3 antibody) at dilution of 1:200 (under 40x lens). Heat mediated antigen retrieval with Tris-EDTA buffer (pH 9.0). This data was developed using the same antibody clone with 67608-1-PBS in a different storage buffer formulation.



mouse heart tissue were subjected to SDS PAGE followed by western blot with 67608-1-Ig (MYBPC3 antibody) at dilution of 1:20000 incubated at room temperature for 1.5 hours. This data was developed using the same antibody clone with 67608-1-PBS in a different storage buffer formulation.



Immunofluorescent analysis of (4% PFA) fixed rat heart tissue using MYBPC3 antibody (67608-1-Ig, Clone: 3C8F8) at dilution of 1:400 and CoraLite®488-Conjugated AffiniPure Goat Anti-Mouse IgG(H+L). This data was developed using the same antibody clone with 67608-1-PBS in a different storage buffer formulation.