

For Research Use Only

CD63 Monoclonal antibody, PBS Only (Detector)

Catalog Number: 67605-3-PBS



Basic Information

Catalog Number:

67605-3-PBS

Size:

100ug, Concentration: 1 mg/ml by Nanodrop;

Source:

Mouse

Isotype:

IgG1

Immunogen Catalog Number:

AG19690

GenBank Accession Number:

BC002349

GeneID (NCBI):

967

UNIPROT ID:

P08962

Full Name:

CD63 molecule

Calculated MW:

26 kDa

Purification Method:

Protein G Magarose purification

CloneNo.:

1B2B2

Applications

Tested Applications:

Cytometric bead array, Indirect ELISA

Species Specificity:

human

Product Information

67605-3-PBS targets CD63 as part of a matched antibody pair:

MP50558-1: 67605-2-PBS capture and 67605-3-PBS detection (validated in Cytometric bead array)

MP50558-2: 67605-4-PBS capture and 67605-3-PBS detection (validated in Cytometric bead array)

Unconjugated mouse monoclonal antibody pair in PBS only (BSA and azide free) storage buffer at a concentration of 1 mg/mL, ready for conjugation.

This conjugation ready format makes antibodies ideal for use in many applications including: ELISAs, multiplex assays requiring matched pairs, mass cytometry, and multiplex imaging applications. Antibody use should be optimized by the end user for each application and assay.

Storage

Storage:

Store at -80°C.

Storage Buffer:

PBS Only

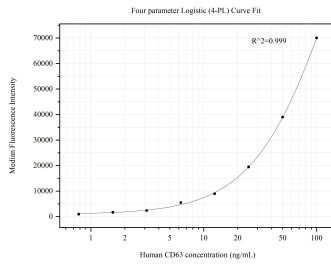
For technical support and original validation data for this product please contact:

T: 1 (888) 4PTGLAB (1-888-478-4522) (toll free in USA), or 1(312) 455-8498 (outside USA)

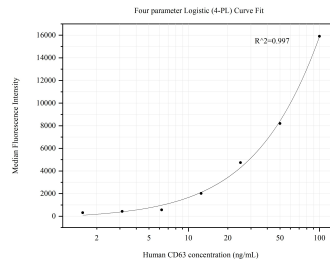
E: proteintech@ptglab.com
W: ptglab.com

This product is exclusively available under Proteintech Group brand and is not available to purchase from any other manufacturer.

Selected Validation Data



Cytometric bead array standard curve of MP50558-1, CD63 Monoclonal Matched Antibody Pair, PBS Only. Capture antibody: 67605-2-PBS. Detection antibody: 67605-3-PBS. Standard: Ag19690. Range: 0.781-100 ng/mL



Cytometric bead array standard curve of MP50558-2, CD63 Monoclonal Matched Antibody Pair, PBS Only. Capture antibody: 67605-4-PBS. Detection antibody: 67605-3-PBS. Standard: Ag19690. Range: 1.563-100 ng/mL