

For Research Use Only

# SDHB Monoclonal antibody, PBS Only



Catalog Number: 67600-1-PBS

Featured Product

## Basic Information

**Catalog Number:**

67600-1-PBS

**Size:**

100ug, Concentration: 1 mg/ml by Nanodrop;

**Source:**

Mouse

**Isotype:**

IgG1

**Immunogen Catalog Number:**

AG29868

**GenBank Accession Number:**

BC007840

**GeneID (NCBI):**

6390

**UNIPROT ID:**

P21912

**Full Name:**

succinate dehydrogenase complex, subunit B, iron sulfur (lp)

**Calculated MW:**

32 kDa

**Observed MW:**

28-32 kDa

**Purification Method:**

Protein A purification

**CloneNo.:**

1A2A5

## Applications

**Tested Applications:**

WB, IF, IHC, ELISA

**Species Specificity:**

Human, Mouse, Rat

## Background Information

SDHB(Succinate dehydrogenase [ubiquinone] iron-sulfur subunit, mitochondrial) is also named as SDH, SDH1 and belongs to the succinate dehydrogenase/fumarate reductase iron-sulfur protein family. The SDHD, SDHB, and SDHC genes encode subunits of mitochondrial complex II (succinate dehydrogenase). Mitochondrial complex II is a heterotetrameric complex involved in the aerobic electron transport chain and catalyses the oxidation of succinate to fumarate (Krebs cycle) with transport of electrons to the ubiquinone pool. SDHA and SDHB are the hydrophilic catalytic part of the complex and are highly conserved(J Med Genet 2004;41:e99). Defects in SDHB are a cause of susceptibility to pheochromocytoma (PCC), paragangliomas type 4 (PGL4), paraganglioma and gastric stromal sarcoma (PGGS) and Cowden-like syndrome (CWDLS).

## Storage

**Storage:**

Store at -20°C. Stable for one year after shipment.

**Storage Buffer:**

PBS only

Aliquoting is unnecessary for -20°C storage

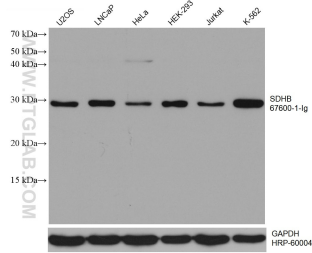
For technical support and original validation data for this product please contact:

T: 1 (888) 4PTGLAB (1-888-478-4522) (toll free in USA), or 1(312) 455-8498 (outside USA)

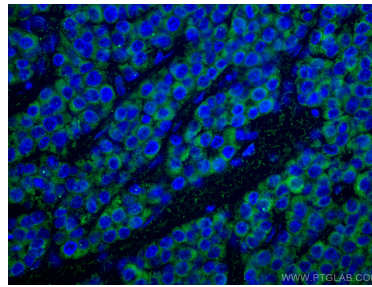
E: [proteintech@ptglab.com](mailto:proteintech@ptglab.com)  
W: [ptglab.com](http://ptglab.com)

This product is exclusively available under Proteintech Group brand and is not available to purchase from any other manufacturer.

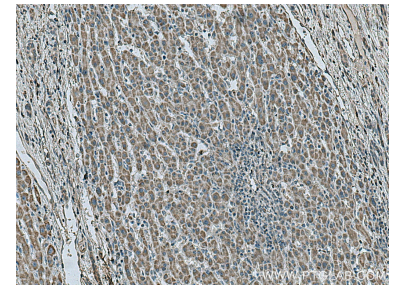
## Selected Validation Data



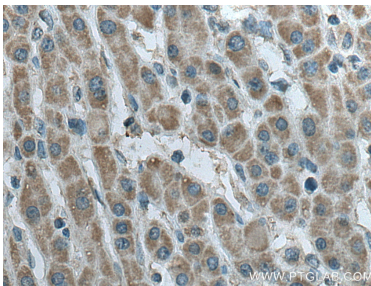
Various lysates were subjected to SDS PAGE followed by western blot with 67600-1-Ig (SDHB antibody) at dilution of 1:15000 incubated at room temperature for 1.5 hours. The membrane was stripped and reblotted with HRP-conjugated GAPDH Monoclonal antibody (HRP-60004) as loading control. This data was developed using the same antibody clone with 67600-1-PBS in a different storage buffer formulation.



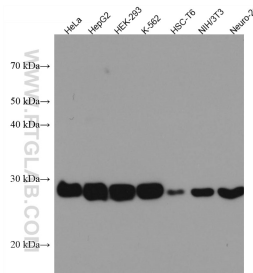
Immunofluorescent analysis of (4% PFA) fixed human liver cancer tissue using SDHB antibody (67600-1-Ig, Clone: 1A2A5) at dilution of 1:400 and CoraLite®488-Conjugated AffiniPure Goat Anti-Mouse IgG(H+L). This data was developed using the same antibody clone with 67600-1-PBS in a different storage buffer formulation.



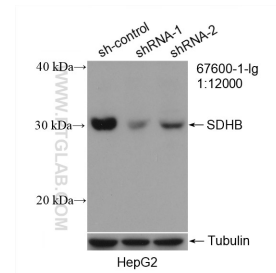
Immunohistochemical analysis of paraffin-embedded human liver cancer tissue slide using 67600-1-Ig (SDHB antibody) at dilution of 1:1000 (under 10x lens). Heat mediated antigen retrieval with Tris-EDTA buffer (pH 9.0). This data was developed using the same antibody clone with 67600-1-PBS in a different storage buffer formulation.



Immunohistochemical analysis of paraffin-embedded human liver cancer tissue slide using 67600-1-Ig (SDHB antibody) at dilution of 1:1000 (under 40x lens). Heat mediated antigen retrieval with Tris-EDTA buffer (pH 9.0). This data was developed using the same antibody clone with 67600-1-PBS in a different storage buffer formulation.



Various lysates were subjected to SDS PAGE followed by western blot with 67600-1-Ig (SDHB antibody) at dilution of 1:10000 incubated at room temperature for 1.5 hours. This data was developed using the same antibody clone with 67600-1-PBS in a different storage buffer formulation.



WB result of SDHB antibody (67600-1-Ig; 1:12000; incubated at room temperature for 1.5 hours) with sh-Control and sh-SDHB transfected HepG2 cells. This data was developed using the same antibody clone with 67600-1-PBS in a different storage buffer formulation.