

For Research Use Only

# Importin Beta Monoclonal antibody, PBS Only

Catalog Number: 67597-1-PBS



## Basic Information

|  |  |   |
|--|--|---|
| <b>Catalog Number:</b><br>67597-1-PBS                      | <b>GenBank Accession Number:</b><br>BC003572       | <b>Purification Method:</b><br>Protein A purification |
| <b>Size:</b><br>100ug , Concentration: 1mg/ml by Nanodrop; | <b>GeneID (NCBI):</b><br>3837                      | <b>CloneNo.:</b><br>1A12B1                            |
| <b>Source:</b><br>Mouse                                    | <b>UNIPROT ID:</b><br>Q14974                       |   |
| <b>Isotype:</b><br>IgG2b                                   | <b>Full Name:</b><br>karyopherin (importin) beta 1 |   |
| <b>Immunogen Catalog Number:</b><br>AG23094                | <b>Calculated MW:</b><br>97 kDa                    |   |
|  | <b>Observed MW:</b><br>95-97 kDa                   |   |

## Applications

**Tested Applications:**  
WB, IHC, FC (Intra), Indirect ELISA

**Species Specificity:**  
human

## Background Information

Importin beta1, also known karyopherin beta or KPNB1, is a nuclear transport receptor that plays a key role in the nuclear import process. Importin beta1 and importin alpha work in concert to transport cargo into the nucleus, functioning as an essential component of the classical nuclear localization signal (NLS) pathway. Elevated expression of importin beta1 has been found in cervical tumors. (22125623)

## Storage

**Storage:**  
Store at -80°C.

**Storage Buffer:**  
PBS Only

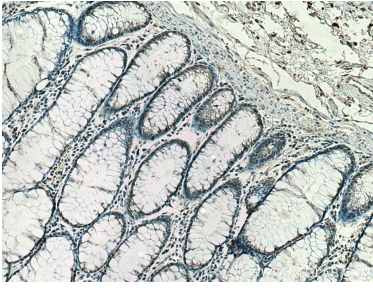
For technical support and original validation data for this product please contact:

T: 1 (888) 4PTGLAB (1-888-478-4522) (toll free in USA), or 1(312) 455-8498 (outside USA)

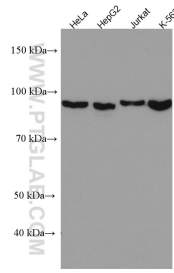
E: [proteintech@ptglab.com](mailto:proteintech@ptglab.com)  
W: [ptglab.com](http://ptglab.com)

This product is exclusively available under Proteintech Group brand and is not available to purchase from any other manufacturer.

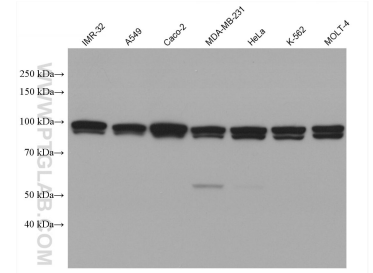
## Selected Validation Data



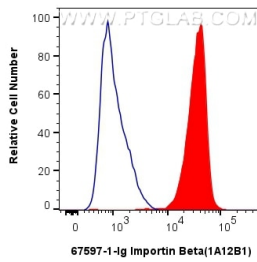
Immunohistochemical analysis of paraffin-embedded human colon cancer tissue slide using 67597-1-Ig (Importin beta antibody) at dilution of 1:400 (under 10x lens). Heat mediated antigen retrieval with Tris-EDTA buffer (pH 9.0). This data was developed using the same antibody clone with 67597-1-PBS in a different storage buffer formulation.



Various lysates were subjected to SDS PAGE followed by western blot with 67597-1-Ig (Importin beta antibody) at dilution of 1:5000 incubated at room temperature for 1.5 hours. This data was developed using the same antibody clone with 67597-1-PBS in a different storage buffer formulation.



Various lysates were subjected to SDS PAGE followed by western blot with 67597-1-Ig (Importin Beta antibody) at dilution of 1:20000 incubated at room temperature for 1.5 hours. This data was developed using the same antibody clone with 67597-1-PBS in a different storage buffer formulation.



1X10<sup>6</sup> Jurkat cells were intracellularly stained with 0.4 ug Anti-Human Importin Beta (67597-1-Ig, Clone:1A12B1) and CoraLite®488-Conjugated AffiniPure Goat Anti-Mouse IgG(H+L) at dilution 1:1000 (red), or 0.4 ug Mouse IgG2b Isotype Control (MPC-11) (65128-1-Ig, Clone: MPC-11) (blue). Cells were fixed and permeabilized with True-Nuclear Transcription Factor Buffer Set. This data was developed using the same antibody clone with 67597-1-PBS in a

