

For Research Use Only

Syntabulin Monoclonal antibody, PBS Only

Catalog Number: 67595-1-PBS



Basic Information

Catalog Number: 67595-1-PBS	GenBank Accession Number: BC012082	Purification Method: Protein A purification
Size: 100ug , Concentration: 1mg/ml by Nanodrop;	GeneID (NCBI): 55638	CloneNo.: 3B11C5
Source: Mouse	UNIPROT ID: Q9NX95	
Isotype: IgG2b	Full Name: Golgi-localized protein	
Immunogen Catalog Number: AG9376	Calculated MW: 662 aa, 72 kDa	
	Observed MW: 90 kDa	

Applications

Tested Applications:
WB, Indirect ELISA

Species Specificity:
human

Storage

Storage:
Store at -80°C.

Storage Buffer:
PBS Only

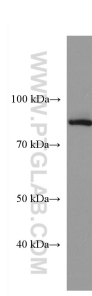
For technical support and original validation data for this product please contact:

T: 1 (888) 4PTGLAB (1-888-478-4522) (toll free in USA), or 1(312) 455-8498 (outside USA)

E: proteintech@ptglab.com
W: ptglab.com

This product is exclusively available under Proteintech Group brand and is not available to purchase from any other manufacturer.

Selected Validation Data



HeLa cells were subjected to SDS PAGE followed by western blot with 67595-1-Ig (Syntabulin antibody) at dilution of 1:3000 incubated at room temperature for 1.5 hours. This data was developed using the same antibody clone with 67595-1-PBS in a different storage buffer formulation.