

For Research Use Only

# SLC25A37 Monoclonal antibody, PBS Only (Detector)

Catalog Number: 67593-6-PBS



## Basic Information

**Catalog Number:**

67593-6-PBS

**Size:**

100ug, Concentration: 1 mg/ml by Nanodrop;

**Source:**

Mouse

**Isotype:**

IgG3

**Immunogen Catalog Number:**

AG26216

**GenBank Accession Number:**

BC132799

**GeneID (NCBI):**

51312

**UNIPROT ID:**

Q9NYZ2

**Full Name:**

solute carrier family 25, member 37

**Purification Method:**

Protein A Magarose purification

**CloneNo.:**

1D11F1

## Applications

**Tested Applications:**

Cytometric bead array, Indirect ELISA

**Species Specificity:**

human

## Product Information

67593-6-PBS targets SLC25A37 as part of a matched antibody pair:

MP50411-3: 67593-5-PBS capture and 67593-6-PBS detection (validated in Cytometric bead array)

MP50411-4: 67593-4-PBS capture and 67593-6-PBS detection (validated in Cytometric bead array)

Unconjugated mouse monoclonal antibody pair in PBS only (BSA and azide free) storage buffer at a concentration of 1 mg/mL, ready for conjugation.

This conjugation ready format makes antibodies ideal for use in many applications including: ELISAs, multiplex assays requiring matched pairs, mass cytometry, and multiplex imaging applications. Antibody use should be optimized by the end user for each application and assay.

## Storage

**Storage:**

Store at -80°C.

**Storage Buffer:**

PBS Only

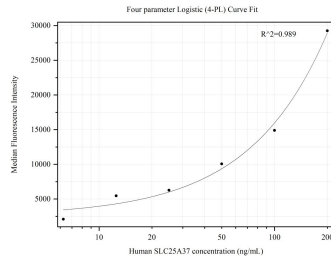
For technical support and original validation data for this product please contact:

T: 1 (888) 4PTGLAB (1-888-478-4522) (toll free in USA), or 1(312) 455-8498 (outside USA)

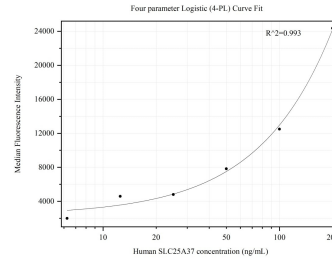
E: [proteintech@ptglab.com](mailto:proteintech@ptglab.com)  
W: [ptglab.com](http://ptglab.com)

**This product is exclusively available under Proteintech Group brand and is not available to purchase from any other manufacturer.**

## Selected Validation Data



Cytometric bead array standard curve of MP50411-3, SLC25A37 Monoclonal Matched Antibody Pair, PBS Only. Capture antibody: 67593-5-PBS. Detection antibody: 67593-6-PBS. Standard:Ag26216. Range: 6.25-200 ng/mL



Cytometric bead array standard curve of MP50411-4, SLC25A37 Monoclonal Matched Antibody Pair, PBS Only. Capture antibody: 67593-4-PBS. Detection antibody: 67593-6-PBS. Standard:Ag26216. Range: 6.25-200 ng/mL