

For Research Use Only

SLC25A37 Monoclonal antibody, PBS Only (Capture)

Catalog Number: 67593-4-PBS



Basic Information

Catalog Number:

67593-4-PBS

Size:

100ug, Concentration: 1 mg/ml by Nanodrop;

Source:

Mouse

Isotype:

IgG1

Immunogen Catalog Number:

AG26216

GenBank Accession Number:

BC132799

GeneID (NCBI):

51312

UNIPROT ID:

Q9NYZ2

Full Name:

solute carrier family 25, member 37

Purification Method:

Protein G Magarose purification

CloneNo.:

2A4G12

Applications

Tested Applications:

Cytometric bead array, Indirect ELISA

Species Specificity:

human

Product Information

67593-4-PBS targets SLC25A37 as part of a matched antibody pair:

MP50411-2: 67593-4-PBS capture and 67593-3-PBS detection (validated in Cytometric bead array)

MP50411-4: 67593-4-PBS capture and 67593-6-PBS detection (validated in Cytometric bead array)

Unconjugated mouse monoclonal antibody pair in PBS only (BSA and azide free) storage buffer at a concentration of 1 mg/mL, ready for conjugation.

This conjugation ready format makes antibodies ideal for use in many applications including: ELISAs, multiplex assays requiring matched pairs, mass cytometry, and multiplex imaging applications. Antibody use should be optimized by the end user for each application and assay.

Storage

Storage:

Store at -80°C.

Storage Buffer:

PBS Only

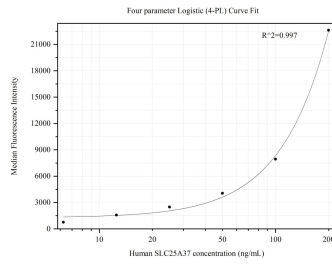
For technical support and original validation data for this product please contact:

T: 1 (888) 4PTGLAB (1-888-478-4522) (toll free in USA), or 1(312) 455-8498 (outside USA)

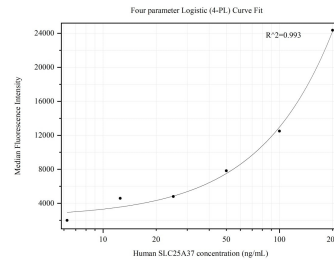
E: proteintech@ptglab.com
W: ptglab.com

This product is exclusively available under Proteintech Group brand and is not available to purchase from any other manufacturer.

Selected Validation Data



Cytometric bead array standard curve of MP50411-2, SLC25A37 Monoclonal Matched Antibody Pair, PBS Only. Capture antibody: 67593-4-PBS. Detection antibody: 67593-3-PBS. Standard: Ag26216. Range: 6.25-200 ng/mL



Cytometric bead array standard curve of MP50411-4, SLC25A37 Monoclonal Matched Antibody Pair, PBS Only. Capture antibody: 67593-4-PBS. Detection antibody: 67593-6-PBS. Standard: Ag26216. Range: 6.25-200 ng/mL