

For Research Use Only

# PHGDH Monoclonal antibody, PBS Only

Catalog Number: 67591-1-PBS



## Basic Information

<b>Catalog Number:</b> 67591-1-PBS	<b>GenBank Accession Number:</b> BC000303	<b>Purification Method:</b> Protein G purification
<b>Size:</b> 100ug, Concentration: 1mg/ml by Nanodrop;	<b>GeneID (NCBI):</b> 26227	<b>CloneNo.:</b> 1E8B8
<b>Source:</b> Mouse	<b>UNIPROT ID:</b> O43175	
<b>Isotype:</b> IgG1	<b>Full Name:</b> phosphoglycerate dehydrogenase	
<b>Immunogen Catalog Number:</b> AG6877	<b>Calculated MW:</b> 57 kDa	
	<b>Observed MW:</b> 57 kDa	

## Applications

**Tested Applications:**  
WB, IHC, IF/ICC, IP, Indirect ELISA

**Species Specificity:**  
human, mouse, rat

## Background Information

PHGDH(D-3-phosphoglycerate dehydrogenase) is also named as 3-PGDH, PGDH3 and belongs to the D-isomer specific 2-hydroxyacid dehydrogenase family. It catalyzes the transition of 3-phosphoglycerate into 3-phosphohydroxypyruvate, which is the first and rate-limiting step in the phosphorylated pathway of serine biosynthesis, using NAD<sup>+</sup>/NADH as a cofactor. 3-PGDH deficiency is a rare recessive inborn error in the biosynthesis of the amino acid L-serine characterized clinically by congenital microcephaly, psychomotor retardation, and intractable seizures(PMID:19235232).

## Storage

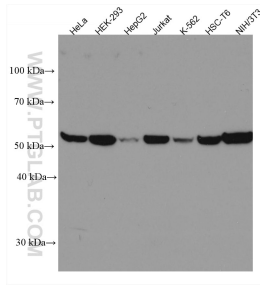
**Storage:**  
Store at -80°C.

**Storage Buffer:**  
PBS Only

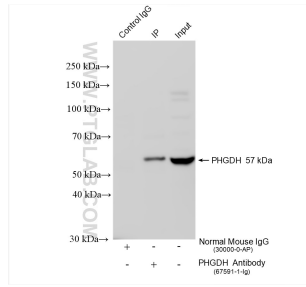
For technical support and original validation data for this product please contact:  
T: 1 (888) 4PTGLAB (1-888-478-4522) (toll free in USA), or 1(312) 455-8498 (outside USA)      E: proteintech@ptglab.com  
W: ptglab.com

This product is exclusively available under Proteintech Group brand and is not available to purchase from any other manufacturer.

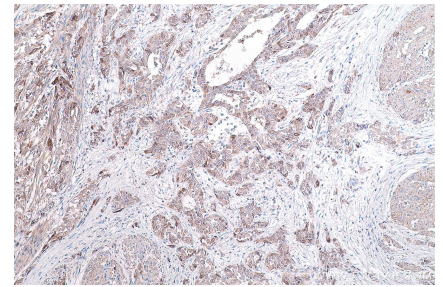
## Selected Validation Data



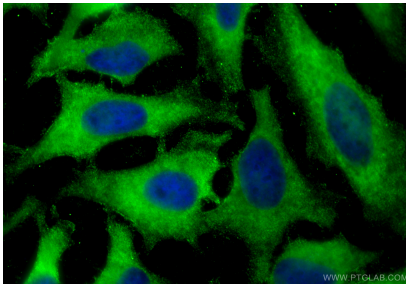
Various lysates were subjected to SDS PAGE followed by western blot with 67591-1-Ig (PHGDH antibody) at dilution of 1:10000 incubated at room temperature for 1.5 hours. This data was developed using the same antibody clone with 67591-1-PBS in a different storage buffer formulation.



IP result of anti-PHGDH (IP:67591-1-Ig, 4ug; Detection:67591-1-Ig 1:3000) with HeLa cells lysate 980 ug. This data was developed using the same antibody clone with 67591-1-PBS in a different storage buffer formulation.



Immunohistochemical analysis of paraffin-embedded human urothelial carcinoma tissue slide using 67591-1-Ig (PHGDH antibody) at dilution of 1:4000 (under 10x lens). Heat mediated antigen retrieval with Tris-EDTA buffer (pH 9.0). This data was developed using the same antibody clone with 67591-1-PBS in a different storage buffer formulation.



Immunofluorescent analysis of (-20°C Ethanol) fixed HeLa cells using PHGDH antibody (67591-1-Ig, Clone: 1E8B8) at dilution of 1:800 and CoraLite®488-Conjugated Goat Anti-Mouse IgG(H+L) (SA00013-1). This data was developed using the same antibody clone with 67591-1-PBS in a different storage buffer formulation.