

For Research Use Only

# ETV6 Monoclonal antibody

Catalog Number:67579-1-Ig



## Basic Information

<b>Catalog Number:</b> 67579-1-Ig	<b>GenBank Accession Number:</b> BC043399	<b>Purification Method:</b> Protein G purification
<b>Size:</b> 150ul , Concentration: 1000 ug/ml by Nanodrop and 556 ug/ml by Bradford method using BSA as the standard;	<b>GeneID (NCBI):</b> 2120	<b>CloneNo.:</b> 2A5A2
<b>Source:</b> Mouse	<b>UNIPROT ID:</b> P41212	<b>Recommended Dilutions:</b> WB 1:1000-1:6000 IHC 1:50-1:500
<b>Isotype:</b> IgG1	<b>Full Name:</b> ets variant 6	
<b>Immunogen Catalog Number:</b> AG30054	<b>Calculated MW:</b> 452 aa, 53 kDa	
	<b>Observed MW:</b> 60 kDa	

## Applications

<b>Tested Applications:</b> WB, IHC, ELISA	<b>Positive Controls:</b>
<b>Species Specificity:</b> Human	<b>WB :</b> Jurkat cells, U2OS cells, A431 cells, K-562 cells, THP-1 cells
<b>Note-IHC: suggested antigen retrieval with TE buffer pH 9.0; (*) Alternatively, antigen retrieval may be performed with citrate buffer pH 6.0</b>	<b>IHC :</b> human breast cancer tissue, human lung cancer tissue

## Background Information

ETV6(ETS Variant Transcription Factor 6), also known as TEL, is a Protein Coding gene. ETV6 is a member of the ETS family of transcription factors encoded by the ETS variant 6 gene (ETV6), located on chromosome 12p13.2. ETV6 protein contains 3 domains: a) the pointed N-terminal (i.e. PNT) domain which forms oligomer partners with itself as well as other transcription factors (e.g. FLI1) and is required for ETV6's transcriptional repressing activity; b) the central regulatory domain; and c) the C-terminal DNA-binding domain(PMID: 22578774). ETV6 is highly expressed in early hematopoietic progenitor cells(HPCs) and is essential for hematopoiesis in the bone marrow(PMID: 31248877).

## Storage

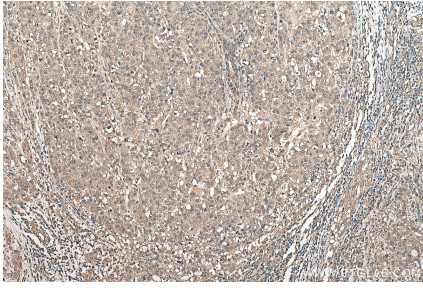
**Storage:**  
Store at -20°C.  
**Storage Buffer:**  
PBS with 0.1% sodium azide and 50% glycerol pH 7.3.  
Aliquoting is unnecessary for -20°C storage

\*\*\* 20ul sizes contain 0.1% BSA

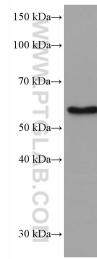
For technical support and original validation data for this product please contact:  
T: 1 (888) 4PTGLAB (1-888-478-4522) (toll free in USA), or 1(312) 455-8498 (outside USA)  
E: proteintech@ptglab.com  
W: ptglab.com

This product is exclusively available under Proteintech Group brand and is not available to purchase from any other manufacturer.

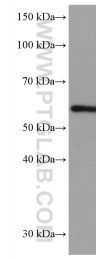
## Selected Validation Data



Immunohistochemical analysis of paraffin-embedded human breast cancer tissue slide using 67579-1-Ig (ETV6 antibody) at dilution of 1:100 (under 10x lens). Heat mediated antigen retrieval with Tris-EDTA buffer (pH 9.0).



Jurkat cells were subjected to SDS PAGE followed by western blot with 67579-1-Ig (ETV6 antibody) at dilution of 1:3000 incubated at room temperature for 1.5 hours.



K-562 cells were subjected to SDS PAGE followed by western blot with 67579-1-Ig (ETV6 antibody) at dilution of 1:3000 incubated at room temperature for 1.5 hours.