

For Research Use Only

# CRX Monoclonal antibody, PBS Only

Catalog Number: 67555-1-PBS



## Basic Information

<b>Catalog Number:</b> 67555-1-PBS	<b>GenBank Accession Number:</b> BC016664	<b>Purification Method:</b> Protein G purification
<b>Size:</b> 100ug , Concentration: 1 mg/ml by Nanodrop;	<b>GeneID (NCBI):</b> 1406	<b>CloneNo.:</b> 1C3C11
<b>Source:</b> Mouse	<b>UNIPROT ID:</b> O43186	
<b>Isotype:</b> IgG1	<b>Full Name:</b> cone-rod homeobox	
<b>Immunogen Catalog Number:</b> AG30086	<b>Calculated MW:</b> 299 aa, 32 kDa	
	<b>Observed MW:</b> 37 kDa	

## Applications

**Tested Applications:**  
WB, IHC, Indirect ELISA

**Species Specificity:**  
Human, mouse, rat, pig

## Background Information

Cone-rod homeobox (Crx) is a homeodomain transcription factor and member of the Otx family, which has been thought to play a critical role in determining and maintaining the phenotype of both pinealocytes and retinal photoreceptors [PMID:17467693]. In the mammalian retina, Crx plays an essential role in the normal development and maintenance of cones and rods and regulates expression of the network of genes that characterize the retina [PMID:17653270]. Elimination of Crx by disruption of the homeobox domain results in loss of the image-forming visual system but not the non-image-forming visual system controlling circadian rhythms [PMID:20438719].

## Storage

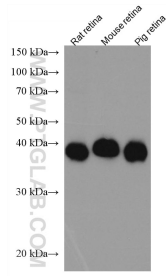
**Storage:**  
Store at -80°C.

**Storage Buffer:**  
PBS Only

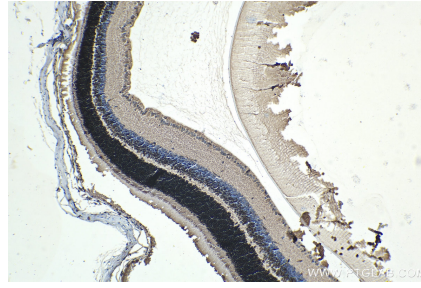
For technical support and original validation data for this product please contact:  
T: 1 (888) 4PTGLAB (1-888-478-4522) (toll free in USA), or 1(312) 455-8498 (outside USA)      E: proteintech@ptglab.com  
W: ptglab.com

This product is exclusively available under Proteintech Group brand and is not available to purchase from any other manufacturer.

## Selected Validation Data



Various lysates were subjected to SDS PAGE followed by western blot with 67555-1-Ig (CRX antibody) at dilution of 1:3000 incubated at room temperature for 1.5 hours. This data was developed using the same antibody clone with 67555-1-PBS in a different storage buffer formulation.



Immunohistochemical analysis of paraffin-embedded mouse eye tissue slide using 67555-1-Ig (CRX antibody) at dilution of 1:4000 (under 10x lens). Heat mediated antigen retrieval with Tris-EDTA buffer (pH 9.0). This data was developed using the same antibody clone with 67555-1-PBS in a different storage buffer formulation.