

For Research Use Only

EEF2 Monoclonal antibody, PBS Only

Catalog Number: 67550-1-PBS



Basic Information

Catalog Number: 67550-1-PBS	GenBank Accession Number: BC126259	Purification Method: Protein G purification
Size: 100ug , Concentration: 1mg/ml by Nanodrop;	GeneID (NCBI): 1938	CloneNo.: 1E4D5
Source: Mouse	UNIPROT ID: P13639	
Isotype: IgG1	Full Name: eukaryotic translation elongation factor 2	
Immunogen Catalog Number: AG13859	Calculated MW: 858 aa, 95 kDa	
	Observed MW: 100 kDa	

Applications

Tested Applications:
WB, IHC, IF/ICC, Indirect ELISA

Species Specificity:
human, mouse, rat, pig

Background Information

EEF2 (Eukaryotic Elongation Factor 2), also known as EF-2 and EF2, is a crucial protein involved in the process of protein synthesis in eukaryotic cells. It plays a pivotal role in the elongation phase of translation, where it facilitates the movement of the ribosome along the mRNA strand. This movement is essential for the addition of amino acids to the growing polypeptide chain.

Storage

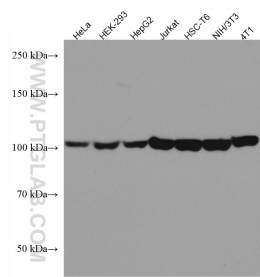
Storage:
Store at -80°C.

Storage Buffer:
PBS Only

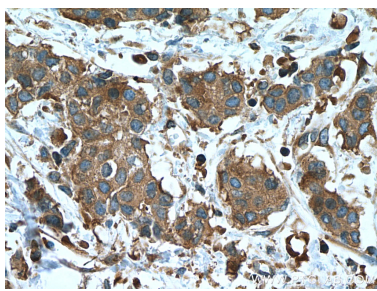
For technical support and original validation data for this product please contact:
T: 1 (888) 4PTGLAB (1-888-478-4522) (toll free in USA), or 1(312) 455-8498 (outside USA)
E: proteintech@ptglab.com
W: ptglab.com

This product is exclusively available under Proteintech Group brand and is not available to purchase from any other manufacturer.

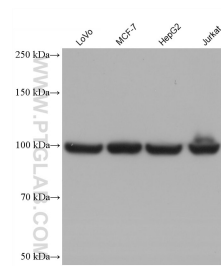
Selected Validation Data



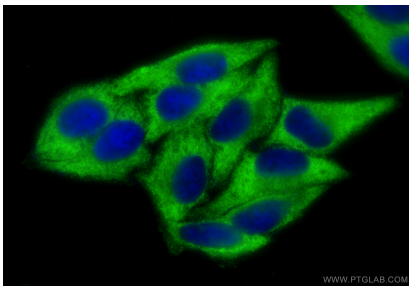
Various lysates were subjected to SDS PAGE followed by western blot with 67550-1-Ig (EEF2 antibody) at dilution of 1:40000 incubated at room temperature for 1.5 hours. This data was developed using the same antibody clone with 67550-1-PBS in a different storage buffer formulation.



Immunohistochemical analysis of paraffin-embedded human breast cancer tissue slide using 67550-1-Ig (EEF2 antibody) at dilution of 1:1000 (under 40x lens). Heat mediated antigen retrieval with Tris-EDTA buffer (pH 9.0). This data was developed using the same antibody clone with 67550-1-PBS in a different storage buffer formulation.



Various lysates were subjected to SDS PAGE followed by western blot with 67550-1-Ig (EEF2 antibody) at dilution of 1:50000 incubated at room temperature for 1.5 hours. This data was developed using the same antibody clone with 67550-1-PBS in a different storage buffer formulation.



Immunofluorescent analysis of (-20°C Ethanol) fixed HepG2 cells using EEF2 antibody (67550-1-Ig, Clone: 1E4D5) at dilution of 1:800 and CoraLite®488-Conjugated Goat Anti-Mouse IgG(H+L) (SA00013-1). This data was developed using the same antibody clone with 67550-1-PBS in a different storage buffer formulation.