

For Research Use Only

# RHOC Monoclonal antibody, PBS Only

Catalog Number: 67542-1-PBS



## Basic Information

|  |  |   |
|--|--|---|
| <b>Catalog Number:</b><br>67542-1-PBS                        | <b>GenBank Accession Number:</b><br>BC007245           | <b>Purification Method:</b><br>Protein A purification |
| <b>Size:</b><br>100ug, Concentration: 1mg/ml by<br>Nanodrop; | <b>GeneID (NCBI):</b><br>389                           | <b>CloneNo.:</b><br>1G1C1                             |
| <b>Source:</b><br>Mouse                                      | <b>UNIPROT ID:</b><br>P08134                           |   |
| <b>Isotype:</b><br>IgG1                                      | <b>Full Name:</b><br>ras homolog gene family, member C |   |
| <b>Immunogen Catalog Number:</b><br>AG14633                  | <b>Calculated MW:</b><br>22 kDa                        |   |
|  | <b>Observed MW:</b><br>22 kDa                          |   |

## Applications

**Tested Applications:**  
WB, IHC, IF/ICC, FC (Intra), Indirect ELISA

**Species Specificity:**  
human, mouse, rat

## Background Information

Ras homolog family member C (RHOC) encodes a Rho-related GTP-binding protein, which belongs to small GTPase superfamily and also Rho family. RHOC. Regulates a signal transduction pathway linking plasma membrane receptors to the assembly of focal adhesions and actin stress fibers. Expression of RHOC contributes to metastatic phenotype of melanoma cells and is associated with multiple cancers including gastric carcinomas, ovarian carcinomas and breast cancer as well.

## Storage

**Storage:**  
Store at -80°C.  
**Storage Buffer:**  
PBS Only

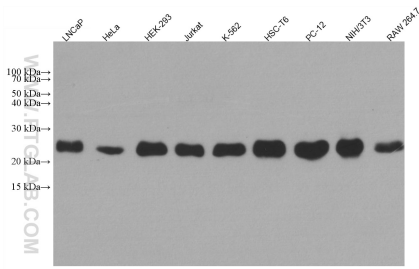
For technical support and original validation data for this product please contact:

T: 1 (888) 4PTGLAB (1-888-478-4522) (toll free  
in USA), or 1(312) 455-8498 (outside USA)

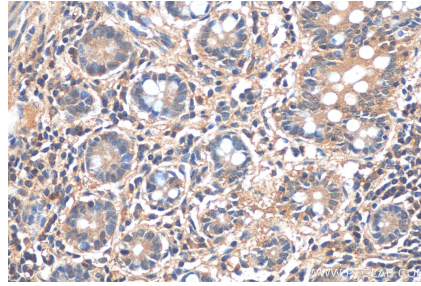
E: [proteintech@ptglab.com](mailto:proteintech@ptglab.com)  
W: [ptglab.com](http://ptglab.com)

**This product is exclusively available under Proteintech Group brand and is not available to purchase from any other manufacturer.**

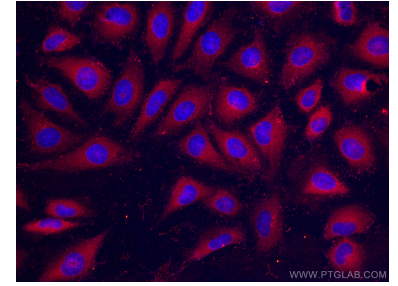
## Selected Validation Data



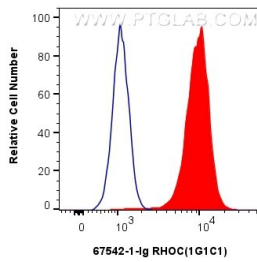
Various lysates were subjected to SDS PAGE followed by western blot with 67542-1-Ig (RHOC antibody) at dilution of 1:20000 incubated at room temperature for 1.5 hours. This data was developed using the same antibody clone with 67542-1-PBS in a different storage buffer formulation.



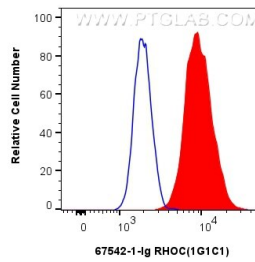
Immunohistochemical analysis of paraffin-embedded human small intestine tissue slide using 67542-1-Ig (RHOC antibody) at dilution of 1:800 (under 40x lens). This data was developed using the same antibody clone with 67542-1-PBS in a different storage buffer formulation.



Immunofluorescent analysis of (4% PFA) fixed HeLa cells using RHOC antibody (67542-1-Ig, Clone: 1G1C1) at dilution of 1:400 and CoraLite®488-Conjugated AffiniPure Goat Anti-Mouse IgG(H+L). This data was developed using the same antibody clone with 67542-1-PBS in a different storage buffer formulation.



1x10<sup>6</sup> Jurkat cells were intracellularly stained with 0.4 ug RHOC Monoclonal antibody (67542-1-Ig, Clone:1G1C1) and CoraLite®488-Conjugated Goat Anti-Mouse IgG(H+L) (SA00013-1)(red), or 0.4 ug Mouse IgG1 isotype control Mouse McAb (66360-1-Ig, Clone: 1F8D3) (blue). Cells were fixed with 4% PFA and permeabilized with Flow Cytometry Perm Buffer (PF00011-C). This data was developed using the same antibody clone with 67542-1-PBS in a different storage buffer



1x10<sup>6</sup> HepG2 cells were intracellularly stained with 0.4 ug RHOC Monoclonal antibody (67542-1-Ig, Clone:1G1C1) and CoraLite®488-Conjugated Goat Anti-Mouse IgG(H+L) (SA00013-1)(red), or 0.4 ug Mouse IgG1 isotype control Mouse McAb (66360-1-Ig, Clone: 1F8D3) (blue). Cells were fixed with 4% PFA and permeabilized with Flow Cytometry Perm Buffer (PF00011-C). This data was developed using the same antibody clone with 67542-1-PBS in a different storage buffer