

For Research Use Only

CCT8 Monoclonal antibody, PBS Only



Catalog Number: 67539-1-PBS

Featured Product

Basic Information

Catalog Number:

67539-1-PBS

Size:

100ug, Concentration: 1 mg/ml by Nanodrop;

Source:

Mouse

Isotype:

IgG2a

Immunogen Catalog Number:

AG30082

GenBank Accession Number:

BC012584

GeneID (NCBI):

10694

UNIPROT ID:

P50990

Full Name:

chaperonin containing TCP1, subunit 8 (theta)

Calculated MW:

548 aa, 60 kDa

Observed MW:

60 kDa

Purification Method:

Protein A purification

CloneNo.:

1A7C3

Applications

Tested Applications:

WB, IF, IHC, Indirect ELISA

Species Specificity:

Human, mouse, rat

Background Information

CCT8, also named as C21orf112, CCTQ, KIAA0002, CCT-theta, TCP-1-theta and NY-REN-15, belongs to the TCP-1 chaperonin family. It is a molecular chaperone; assists the folding of proteins upon ATP hydrolysis. As part of the BBS/CCT complex, CCT8 may play a role in the assembly of BBSome, a complex involved in ciliogenesis regulating transports vesicles to the cilia. Dysregulation of CCT8 has been linked to proliferation and invasion of tumors.

Storage

Storage:

Store at -80°C.

Storage Buffer:

PBS Only

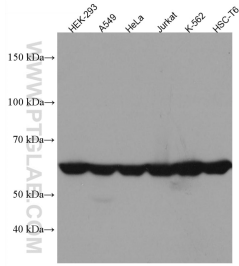
For technical support and original validation data for this product please contact:

T: 1 (888) 4PTGLAB (1-888-478-4522) (toll free in USA), or 1(312) 455-8498 (outside USA)

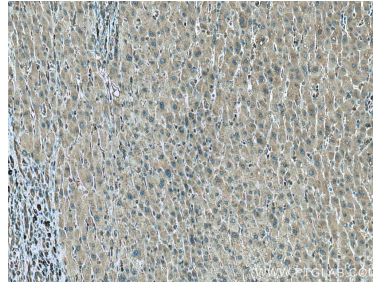
E: proteintech@ptglab.com
W: ptglab.com

This product is exclusively available under Proteintech Group brand and is not available to purchase from any other manufacturer.

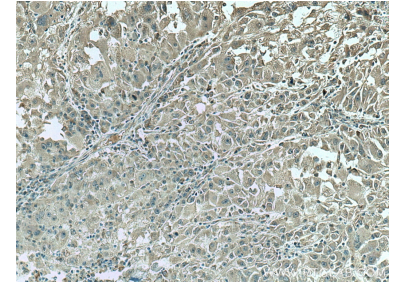
Selected Validation Data



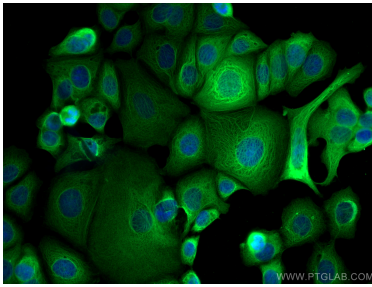
Various lysates were subjected to SDS PAGE followed by western blot with 67539-1-Ig (CCT8 antibody) at dilution of 1:20000 incubated at room temperature for 1.5 hours. This data was developed using the same antibody clone with 67539-1-PBS in a different storage buffer formulation.



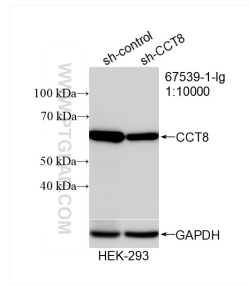
Immunohistochemical analysis of paraffin-embedded human liver cancer tissue slide using 67539-1-Ig (CCT8 antibody) at dilution of 1:2000 (under 10x lens). Heat mediated antigen retrieval with Tris-EDTA buffer (pH 9.0). This data was developed using the same antibody clone with 67539-1-PBS in a different storage buffer formulation.



Immunohistochemical analysis of paraffin-embedded human liver cancer tissue slide using 67539-1-Ig (CCT8 antibody) at dilution of 1:2000 (under 10x lens). Heat mediated antigen retrieval with Tris-EDTA buffer (pH 9.0). This data was developed using the same antibody clone with 67539-1-PBS in a different storage buffer formulation.



Immunofluorescent analysis of (-20°C Methanol) fixed MCF-7 cells using CCT8 antibody (67539-1-Ig, Clone: 1A7C3) at dilution of 1:1500 and CoraLite®488-Conjugated AffiniPure Goat Anti-Mouse IgG(H+L). This data was developed using the same antibody clone with 67539-1-PBS in a different storage buffer formulation.



WB result of CCT8 antibody (67539-1-Ig; 1:10000; incubated at room temperature for 1.5 hours) with sh-Control and sh-CCT8 transfected HEK-293 cells. This data was developed using the same antibody clone with 67539-1-PBS in a different storage buffer formulation.