

For Research Use Only

# SALL2 Monoclonal antibody, PBS Only



Catalog Number: 67522-1-PBS

## Basic Information

<b>Catalog Number:</b> 67522-1-PBS	<b>GenBank Accession Number:</b> BC024245	<b>Purification Method:</b> Protein A purification
<b>Size:</b> 100ug , Concentration: 1 mg/ml by Nanodrop;	<b>GeneID (NCBI):</b> 6297	<b>CloneNo.:</b> 3B6G2
<b>Source:</b> Mouse	<b>UNIPROT ID:</b> Q9Y467	
<b>Isotype:</b> IgG2a	<b>Full Name:</b> sal-like 2 (Drosophila)	
<b>Immunogen Catalog Number:</b> AG30007	<b>Calculated MW:</b> 1007 aa, 105 kDa	
	<b>Observed MW:</b> 140 kDa	

## Applications

**Tested Applications:**  
WB, Indirect ELISA

**Species Specificity:**  
Human, mouse, rat

## Background Information

Sall2 (SALL2, sal-like 2, HSAL2, p150(Sal2)) are mammalian homologs of the Drosophila region-specific home-otic gene spalt (sal), which encodes a zinc finger- containing transcription regulator. Mammalian Sall1 may mediate higher order chromatin structure and may be a component of a distinct heterochromatin-dependent silencing process. Sall2 is a p53-independent regulator of p21 and BAX, and can function in some cell types as a regulator of cell survival. Human Sall2 is present in brain, heart, kidney and pancreas.

## Storage

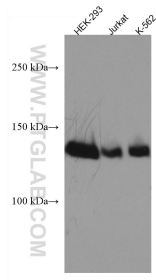
**Storage:**  
Store at -80°C.

**Storage Buffer:**  
PBS Only

For technical support and original validation data for this product please contact:  
T: 1 (888) 4PTGLAB (1-888-478-4522) (toll free in USA), or 1(312) 455-8498 (outside USA)      E: [proteintech@ptglab.com](mailto:proteintech@ptglab.com)  
W: [ptglab.com](http://ptglab.com)

**This product is exclusively available under Proteintech Group brand and is not available to purchase from any other manufacturer.**

## Selected Validation Data



Various lysates were subjected to SDS PAGE followed by western blot with 67522-1-Ig (SALL2 antibody) at dilution of 1:3000 incubated at room temperature for 1.5 hours. This data was developed using the same antibody clone with 67522-1-PBS in a different storage buffer formulation.