

For Research Use Only

# HPRT Monoclonal antibody, PBS Only

Catalog Number: 67518-1-PBS

Featured Product



## Basic Information

Catalog Number:

67518-1-PBS

Size:

100ug, Concentration: 1mg/ml by Nanodrop;

Source:

Mouse

Isotype:

IgG1

Immunogen Catalog Number:

AG7044

GenBank Accession Number:

BC000578

GeneID (NCBI):

3251

UNIPROT ID:

P00492

Full Name:

hypoxanthine phosphoribosyltransferase 1

Calculated MW:

25 kDa

Observed MW:

24-28 kDa

Purification Method:

Protein A purification

CloneNo.:

1C3D1

## Applications

Tested Applications:

WB, IHC, IF/ICC, Indirect ELISA

Species Specificity:

human, mouse, rat

## Background Information

HPRT, also named HPRT1 and HGPRT, plays a central role in the generation of purine nucleotides through the purine salvage pathway. Mutation of HPRT1 is associated with Lesch-Nyhan syndrome (LNS) which is an X-linked inherited neurogenetic disorder of purine metabolism. It has been reported that HPRT1 also plays an important role in HPRT-related gout. 67518-1-Ig antibody detects the protein around 28 kDa in SDS-PAGE. And HPRT1 deficient cell line Sp2/0 was served as a negative control in PTC's results. (PMID:20544509, 28045594, 27379977)

## Storage

Storage:

Store at -80°C.

Storage Buffer:

PBS Only

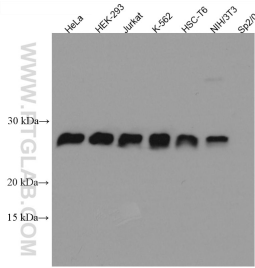
For technical support and original validation data for this product please contact:

T: 1 (888) 4PTGLAB (1-888-478-4522) (toll free in USA), or 1(312) 455-8498 (outside USA)

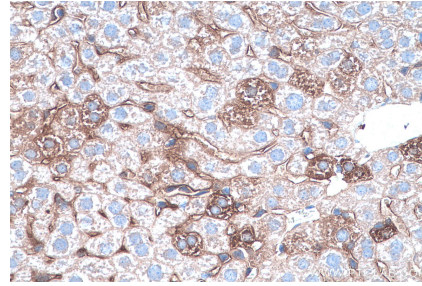
E: [proteintech@ptglab.com](mailto:proteintech@ptglab.com)  
W: [ptglab.com](http://ptglab.com)

This product is exclusively available under Proteintech Group brand and is not available to purchase from any other manufacturer.

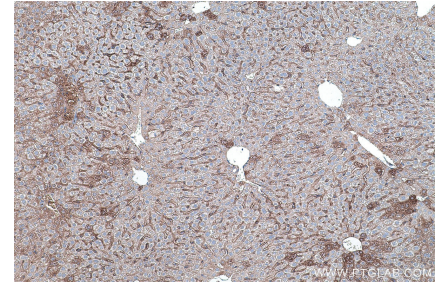
## Selected Validation Data



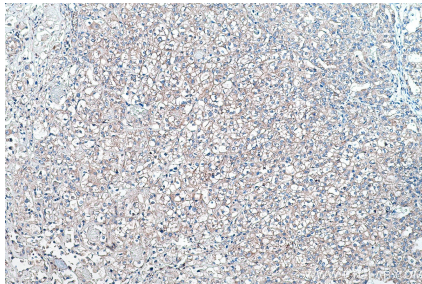
Various lysates were subjected to SDS PAGE followed by western blot with 67518-1-Ig (HPRT antibody) at dilution of 1:2500 incubated at room temperature for 1.5 hours. HPRT1 deficient cell line Sp2/0 was served as a negative control. This data was developed using the same antibody clone with 67518-1-PBS in a different storage buffer formulation.



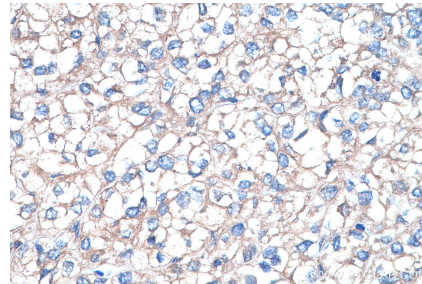
Immunohistochemical analysis of paraffin-embedded mouse liver tissue slide using 67518-1-Ig (HPRT antibody) at dilution of 1:8000 (under 40x lens). Heat mediated antigen retrieval with Tris-EDTA buffer (pH 9.0). This data was developed using the same antibody clone with 67518-1-PBS in a different storage buffer formulation.



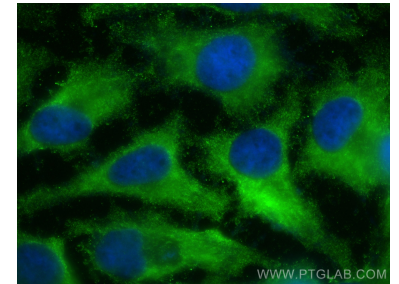
Immunohistochemical analysis of paraffin-embedded mouse liver tissue slide using 67518-1-Ig (HPRT antibody) at dilution of 1:8000 (under 10x lens). Heat mediated antigen retrieval with Tris-EDTA buffer (pH 9.0). This data was developed using the same antibody clone with 67518-1-PBS in a different storage buffer formulation.



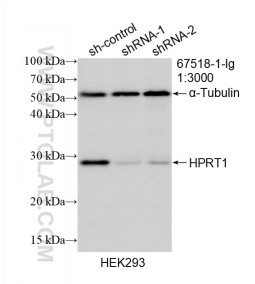
Immunohistochemical analysis of paraffin-embedded human endometrial cancer tissue slide using 67518-1-Ig (HPRT antibody) at dilution of 1:8000 (under 10x lens). Heat mediated antigen retrieval with Tris-EDTA buffer (pH 9.0). This data was developed using the same antibody clone with 67518-1-PBS in a different storage buffer formulation.



Immunohistochemical analysis of paraffin-embedded human endometrial cancer tissue slide using 67518-1-Ig (HPRT antibody) at dilution of 1:8000 (under 40x lens). Heat mediated antigen retrieval with Tris-EDTA buffer (pH 9.0). This data was developed using the same antibody clone with 67518-1-PBS in a different storage buffer formulation.



Immunofluorescent analysis of (-20°C Ethanol) fixed HeLa cells using HPRT antibody (67518-1-Ig, Clone: 1C3D1) at dilution of 1:800 and CoraLite@488-Conjugated Goat Anti-Mouse IgG(H+L) (SA00013-1). This data was developed using the same antibody clone with 67518-1-PBS in a different storage buffer formulation.



WB result of HPRT antibody (67518-1-Ig; 1:3000; incubated at room temperature for 1.5 hours) with sh-Control and sh-HPRT transfected HEK-293 cells. This data was developed using the same antibody clone with 67518-1-PBS in a different storage buffer formulation.