

For Research Use Only

TPI1 Monoclonal antibody, PBS Only

Catalog Number: 67515-1-PBS

Featured Product



Basic Information

Catalog Number:

67515-1-PBS

Size:

100ug, Concentration: 1 mg/ml by Nanodrop;

Source:

Mouse

Isotype:

IgG1

Immunogen Catalog Number:

AG16653

GenBank Accession Number:

BC007086

GeneID (NCBI):

7167

UNIPROT ID:

P60174

Full Name:

triosephosphate isomerase 1

Calculated MW:

27 kDa

Observed MW:

27 kDa

Purification Method:

Protein G purification

CloneNo.:

2E7E5

Applications

Tested Applications:

WB, IF, IHC, Indirect ELISA

Species Specificity:

Human, Mouse, Rat

Background Information

TPI1 (Triosephosphate isomerase) is also named as TIM, TPI and belongs to the triosephosphate isomerase family. It is a key enzyme in cell metabolism that controls the glycolytic flow and energy production through the interconversion of dihydroxyacetone phosphate (DHAP) and D-glyceraldehyde 3-phosphate (G3P) (PMID:19251756). Defects in TPI1 are the cause of triosephosphate isomerase deficiency (TPI deficiency). It can exist as a homodimer (PMID:18562316).

Storage

Storage:

Store at -80°C.

Storage Buffer:

PBS Only

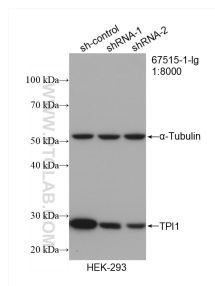
For technical support and original validation data for this product please contact:

T: 1 (888) 4PTGLAB (1-888-478-4522) (toll free in USA), or 1(312) 455-8498 (outside USA)

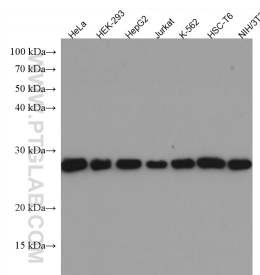
E: proteintech@ptglab.com
W: ptglab.com

This product is exclusively available under Proteintech Group brand and is not available to purchase from any other manufacturer.

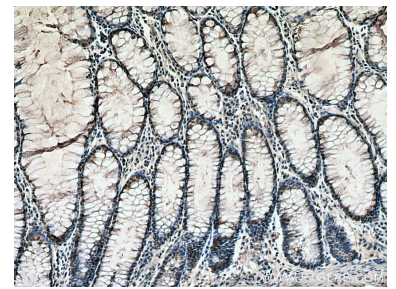
Selected Validation Data



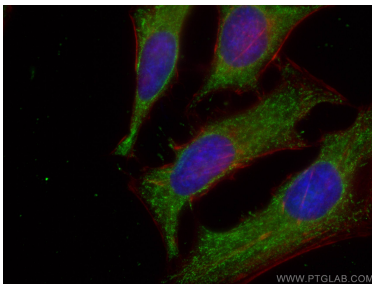
WB result of TPI1 antibody (67515-1-Ig; 1:8000; incubated at room temperature for 1.5 hours) with sh-Control and sh-TPI1 transfected HEK-293 cells. This data was developed using the same antibody clone with 67515-1-PBS in a different storage buffer formulation.



Various lysates were subjected to SDS PAGE followed by western blot with 67515-1-Ig (TPI1 antibody) at dilution of 1:10000 incubated at room temperature for 1.5 hours. This data was developed using the same antibody clone with 67515-1-PBS in a different storage buffer formulation.



Immunohistochemical analysis of paraffin-embedded human colon cancer tissue slide using 67515-1-Ig (TPI1 antibody) at dilution of 1:1000 (under 10x lens). Heat mediated antigen retrieval with Tris-EDTA buffer (pH 9.0). This data was developed using the same antibody clone with 67515-1-PBS in a different storage buffer formulation.



Immunofluorescent analysis of (-20°C Ethanol) fixed HeLa cells using TPI1 antibody (67515-1-Ig; Clone: 2E7E5) at dilution of 1:400 and CoraLite®488-Conjugated AffiniPure Goat Anti-Mouse IgG(H+L), CL594-Phalloidin (red). This data was developed using the same antibody clone with 67515-1-PBS in a different storage buffer formulation.