

For Research Use Only

ZEB2 Monoclonal antibody, PBS Only

Catalog Number: 67514-1-PBS

Featured Product



Basic Information

Catalog Number: 67514-1-PBS	GenBank Accession Number: BC127102	Purification Method: Protein A purification
Size: 100ug , Concentration: 1 mg/ml by Nanodrop;	GeneID (NCBI): 9839	CloneNo.: 1D3A2
Source: Mouse	UNIPROT ID: O60315	
Isotype: IgG1	Full Name: zinc finger E-box binding homeobox 2	
Immunogen Catalog Number: AG25477	Observed MW: 160 kDa	

Applications

Tested Applications:
WB, FC (Intra), ELISA

Species Specificity:
human, mouse, rat

Background Information

Zinc finger E-box-binding homeobox (ZEB2) is a key transcription factor that acts as a multifunctional regulator during nervous system development. ZEB2 contains two zinc finger domains and a homeodomain-like sequence and interacts with the TGF- β superfamily signaling regulators, Smads, to regulate the expression of their downstream genes. ZEB2 is expressed in the developing neural tube, as well as in neural crest cells, the hippocampus and the cerebral cortex. ZEB2 has previously been implicated in EMT, cell-cycle progression, apoptosis and senescence. ZEB2 was overexpressed in bladder, ovarian, stomach, pancreatic and squamous cell carcinoma, in the intestinal subtype of stomach cancers, and at the invasive front of CRC where EMT is most prominent. ZEB2 also mediates cell-fate decision in neuronal, T cells and hematopoietic stem cells. The calculated molecular weight of ZEB2 is 136 kDa, but we find the 95 kDa band in some publication (PMID: 27659015)

Storage

Storage:
Store at -80°C.

Storage Buffer:
PBS Only

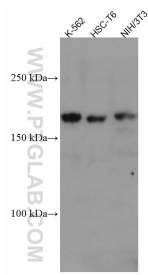
For technical support and original validation data for this product please contact:

T: 1 (888) 4PTGLAB (1-888-478-4522) (toll free in USA), or 1(312) 455-8498 (outside USA)

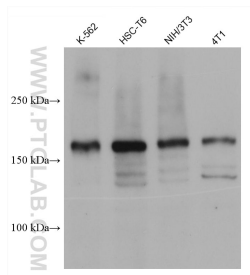
E: proteintech@ptglab.com
W: ptglab.com

This product is exclusively available under Proteintech Group brand and is not available to purchase from any other manufacturer.

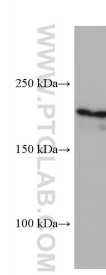
Selected Validation Data



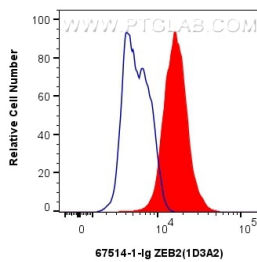
Various lysates were subjected to SDS PAGE followed by western blot with 67514-1-Ig (ZEB2 antibody) at dilution of 1:1000 incubated at room temperature for 1.5 hours. This data was developed using the same antibody clone with 67514-1-PBS in a different storage buffer formulation.



Various lysates were subjected to SDS PAGE followed by western blot with 67514-1-Ig (ZEB2 antibody) at dilution of 1:5000 incubated at room temperature for 1.5 hours. This data was developed using the same antibody clone with 67514-1-PBS in a different storage buffer formulation.



HT-1080 cells were subjected to SDS PAGE followed by western blot with 67514-1-Ig (ZEB2 antibody) at dilution of 1:5000 incubated at room temperature for 1.5 hours. This data was developed using the same antibody clone with 67514-1-PBS in a different storage buffer formulation.



1x10⁶ HepG2 cells were intracellularly stained with 0.4 ug ZEB2 Monoclonal antibody (67514-1-Ig, Clone:1D3A2) and CoraLite® 488-Conjugated AffiniPure Goat Anti-Mouse IgG(H+L) (SA00013-1)(red), or 0.4 ug Mouse IgG1 isotype control Mouse McAb (66360-1-Ig, Clone: 1F8D3) (blue). Cells were fixed and permeabilized with True-Nuclear Transcription Factor Buffer Set. This data was developed using the same antibody clone with 67514-1-PBS in a different storage buffer