

For Research Use Only

RAN Monoclonal antibody, PBS Only

Catalog Number: 67500-1-PBS



Basic Information

Catalog Number: 67500-1-PBS	GenBank Accession Number: BC004272	Purification Method: Protein A purification
Size: 100ug, Concentration: 1 mg/ml by Nanodrop;	GeneID (NCBI): 5901	CloneNo.: 1B11E1
Source: Mouse	UNIPROT ID: P62826	
Isotype: IgG2b	Full Name: RAN, member RAS oncogene family	
Immunogen Catalog Number: AG30034	Calculated MW: 25 kDa	
	Observed MW: 24 kDa	

Applications

Tested Applications:
WB, IF, IHC, Indirect ELISA

Species Specificity:
Human, mouse, rat

Background Information

RAN is also named as ARA24, Ras-like protein TC4 and GTPase Ran, and belongs to the small GTPase superfamily family and the Ran family. GTPase Ran switches between a cytoplasmic GDP- and a nuclear GTP-bound state by nucleotide exchange and GTP hydrolysis (PMID:7819259, PMID:32528950). RAN (GTP-bound form) triggers microtubule assembly at mitotic chromosomes and is required for normal mitotic spindle assembly and chromosome segregation (PMID:10408446, PMID:29040603, PMID:32528950).

Storage

Storage:
Store at -80°C.

Storage Buffer:
PBS Only

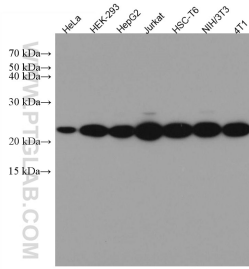
For technical support and original validation data for this product please contact:

T: 1 (888) 4PTGLAB (1-888-478-4522) (toll free in USA), or 1(312) 455-8498 (outside USA)

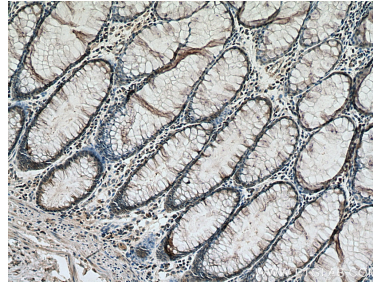
E: proteintech@ptglab.com
W: ptglab.com

This product is exclusively available under Proteintech Group brand and is not available to purchase from any other manufacturer.

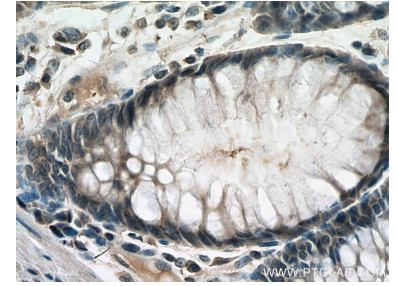
Selected Validation Data



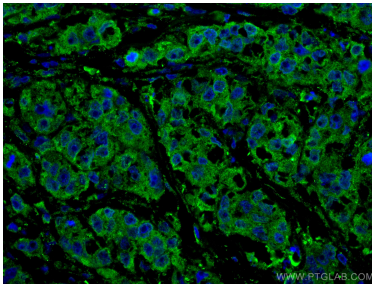
Various lysates were subjected to SDS PAGE followed by western blot with 67500-1-Ig (RAN antibody) at dilution of 1:10000 incubated at room temperature for 1.5 hours. This data was developed using the same antibody clone with 67500-1-PBS in a different storage buffer formulation.



Immunohistochemical analysis of paraffin-embedded human colon cancer tissue slide using 67500-1-Ig (RAN antibody) at dilution of 1:400 (under 10x lens). Heat mediated antigen retrieval with Tris-EDTA buffer (pH 9.0). This data was developed using the same antibody clone with 67500-1-PBS in a different storage buffer formulation.



Immunohistochemical analysis of paraffin-embedded human colon cancer tissue slide using 67500-1-Ig (RAN antibody) at dilution of 1:400 (under 40x lens). Heat mediated antigen retrieval with Tris-EDTA buffer (pH 9.0). This data was developed using the same antibody clone with 67500-1-PBS in a different storage buffer formulation.



Immunofluorescent analysis of (4% PFA) fixed human breast cancer tissue using RAN antibody (67500-1-Ig, Clone: 1B11E1) at dilution of 1:400 and CoraLite®488-Conjugated AffiniPure Goat Anti-Mouse IgG(H+L). This data was developed using the same antibody clone with 67500-1-PBS in a different storage buffer formulation.