

For Research Use Only

PRKACA Monoclonal antibody, PBS Only



Catalog Number: 67491-1-PBS

Featured Product

Basic Information

Catalog Number:

67491-1-PBS

Size:

100ug, Concentration: 1 mg/ml by Nanodrop;

Source:

Mouse

Isotype:

IgG2a

Immunogen Catalog Number:

AG26400

GenBank Accession Number:

BC039846

GeneID (NCBI):

5566

UNIPROT ID:

P17612

Full Name:

protein kinase, cAMP-dependent, catalytic, alpha

Calculated MW:

41 kDa

Observed MW:

38-43 kDa

Purification Method:

Protein A purification

CloneNo.:

4G10D7

Applications

Tested Applications:

WB, IHC, ELISA

Species Specificity:

Human, Mouse, Rat

Background Information

PRKACA, also named as PKACA and PKA C-alpha, belongs to the protein kinase superfamily. AGC Ser/Thr protein kinase family and cAMP subfamily. It phosphorylates a large number of substrates in the cytoplasm and the nucleus.

Storage

Storage:

Store at -80°C.

Storage Buffer:

PBS only

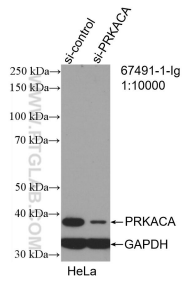
For technical support and original validation data for this product please contact:

T: 1 (888) 4PTGLAB (1-888-478-4522) (toll free in USA), or 1(312) 455-8498 (outside USA)

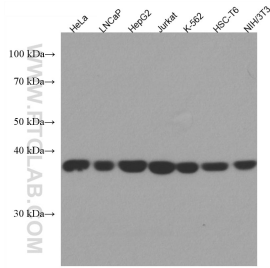
E: proteintech@ptglab.com
W: ptglab.com

This product is exclusively available under Proteintech Group brand and is not available to purchase from any other manufacturer.

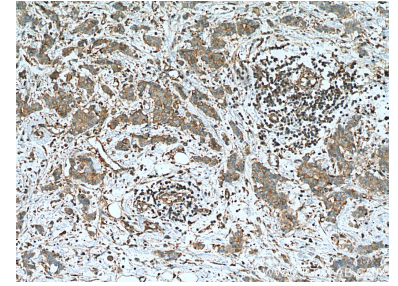
Selected Validation Data



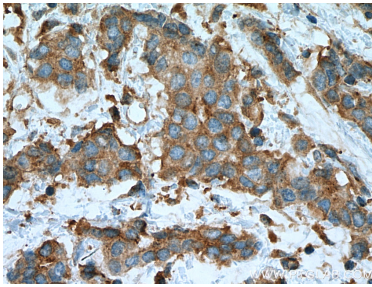
WB result of PRKACA antibody (67491-1-Ig; 1:10000; incubated at room temperature for 1.5 hours) with sh-Control and sh-PRKACA transfected HeLa cells. This data was developed using the same antibody clone with 67491-1-PBS in a different storage buffer formulation.



Various lysates were subjected to SDS PAGE followed by western blot with 67491-1-Ig (PRKACA antibody) at dilution of 1:2300 incubated at room temperature for 1.5 hours. This data was developed using the same antibody clone with 67491-1-PBS in a different storage buffer formulation.



Immunohistochemical analysis of paraffin-embedded human breast cancer tissue slide using 67491-1-Ig (PRKACA antibody) at dilution of 1:1000 (under 10x lens). Heat mediated antigen retrieval with Tris-EDTA buffer (pH 9.0). This data was developed using the same antibody clone with 67491-1-PBS in a different storage buffer formulation.



Immunohistochemical analysis of paraffin-embedded human breast cancer tissue slide using 67491-1-Ig (PRKACA antibody) at dilution of 1:1000 (under 40x lens). Heat mediated antigen retrieval with Tris-EDTA buffer (pH 9.0). This data was developed using the same antibody clone with 67491-1-PBS in a different storage buffer formulation.