

For Research Use Only

# MFN2 Monoclonal antibody, PBS Only



Catalog Number: 67487-1-PBS

Featured Product

## Basic Information

<b>Catalog Number:</b> 67487-1-PBS	<b>GenBank Accession Number:</b> BC017061	<b>Purification Method:</b> Protein A purification
<b>Size:</b> 100ug , Concentration: 1 mg/ml by Nanodrop;	<b>GeneID (NCBI):</b> 9927	<b>CloneNo.:</b> 5F3B3
<b>Source:</b> Mouse	<b>ENSEMBL Gene ID:</b> ENSG00000116688	
<b>Isotype:</b> IgG2a	<b>UNIPROT ID:</b> O95140	
<b>Immunogen Catalog Number:</b> AG29873	<b>Full Name:</b> mitofusin 2	
	<b>Calculated MW:</b> 757 aa, 86 kDa	
	<b>Observed MW:</b> 86 kDa	

## Applications

### Tested Applications:

WB, IF, IHC, ELISA

### Species Specificity:

Human, Mouse, Rat

## Background Information

MFN2, also named as CPRP1 and KIAA0214, belongs to the mitofusin family. It is an Essential transmembrane GTPase, which mediates mitochondrial fusion. MFN2 acts independently of the cytoskeleton. It therefore plays a central role in mitochondrial metabolism and may be associated with obesity and/or apoptosis processes. Overexpression of MFN2 induces the formation of mitochondrial networks. It plays an important role in the regulation of vascular smooth muscle cell proliferation. Defects in MFN2 are the cause of Charcot-Marie-Tooth disease type 2A2 (CMT2A2). Defects in MFN2 are the cause of Charcot-Marie-Tooth disease type 6 (CMT6). Ubiquitinated forms of Mfn2 (mono- and polyubiquitinated) are present during mitophagy.

## Storage

### Storage:

Store at -20°C. Stable for one year after shipment.

### Storage Buffer:

PBS only

Aliquoting is unnecessary for -20°C storage

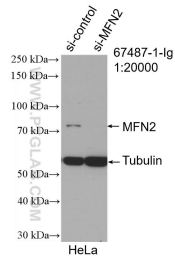
For technical support and original validation data for this product please contact:

T: 1 (888) 4PTGLAB (1-888-478-4522) (toll free in USA), or 1(312) 455-8498 (outside USA)

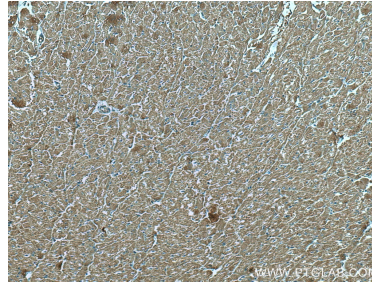
E: [proteintech@ptglab.com](mailto:proteintech@ptglab.com)  
W: [ptglab.com](http://ptglab.com)

This product is exclusively available under Proteintech Group brand and is not available to purchase from any other manufacturer.

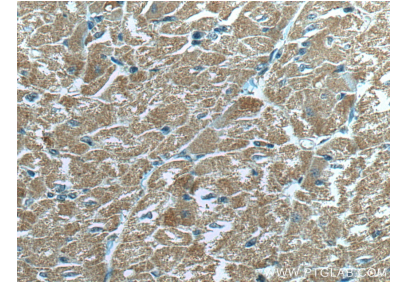
## Selected Validation Data



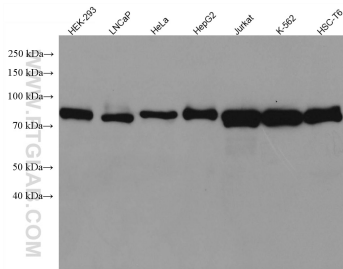
WB result of MFN2 antibody (67487-1-Ig; 1:20000; incubated at room temperature for 1.5 hours) with sh-Control and sh-MFN2 transfected HeLa cells. This data was developed using the same antibody clone with 67487-1-PBS in a different storage buffer formulation.



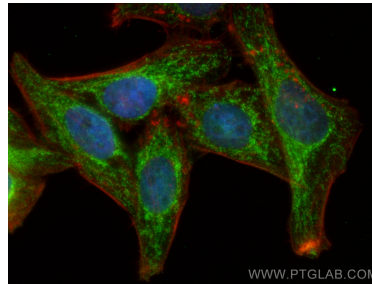
Immunohistochemical analysis of paraffin-embedded human heart tissue slide using 67487-1-Ig (MFN2 antibody) at dilution of 1:2000 (under 10x lens). Heat mediated antigen retrieval with Tris-EDTA buffer (pH 9.0). This data was developed using the same antibody clone with 67487-1-PBS in a different storage buffer formulation.



Immunohistochemical analysis of paraffin-embedded human heart tissue slide using 67487-1-Ig (MFN2 antibody) at dilution of 1:2000 (under 40x lens). Heat mediated antigen retrieval with Tris-EDTA buffer (pH 9.0). This data was developed using the same antibody clone with 67487-1-PBS in a different storage buffer formulation.



Various lysates were subjected to SDS PAGE followed by western blot with 67487-1-Ig (MFN2 antibody) at dilution of 1:20000 incubated at room temperature for 1.5 hours. This data was developed using the same antibody clone with 67487-1-PBS in a different storage buffer formulation.



Immunofluorescent analysis of (4% PFA) fixed HepG2 cells using MFN2 antibody (67487-1-Ig, Clone: 5F3B3) at dilution of 1:800 and CoraLite@488-Conjugated AffiniPure Goat Anti-Mouse IgG(H+L), CL594-Phalloidin (red). This data was developed using the same antibody clone with 67487-1-PBS in a different storage buffer formulation.