

For Research Use Only

S100P Monoclonal antibody, PBS Only (Capture)

Catalog Number: 67485-1-PBS



Basic Information

Catalog Number: 67485-1-PBS	GenBank Accession Number: BC006819	Purification Method: Protein A purification
Size: 100ug, Concentration: 1mg/ml by Nanodrop;	GeneID (NCBI): 6286	CloneNo.: 1G6C3
Source: Mouse	UNIPROT ID: P25815	
Isotype: IgG2b	Full Name: S100 calcium binding protein P	
Immunogen Catalog Number: AG19115	Calculated MW: 95 aa, 11 kDa	
	Observed MW: 10 kDa	

Applications

Tested Applications:
WB, IHC, IF/ICC, Cytometric bead array, Indirect ELISA

Species Specificity:
human

Product Information

67485-1-PBS targets S100P as part of a matched antibody pair:

MP51168-2: 67485-1-PBS capture and 67485-4-PBS detection (validated in Cytometric bead array)

Unconjugated mouse monoclonal antibody pair in PBS only (BSA and azide free) storage buffer at a concentration of 1 mg/mL, ready for conjugation.

This conjugation ready format makes antibodies ideal for use in many applications including: ELISAs, multiplex assays requiring matched pairs, mass cytometry, and multiplex imaging applications. Antibody use should be optimized by the end user for each application and assay.

Background Information

S100P protein is a relatively small (95 amino acid) isoform of the S100 protein family that was first isolated from human placenta. Overexpression of S100P has been detected in several cancers such as breast, colon, prostate, pancreatic and lung carcinomas, and the protein has been functionally implicated in carcinogenic processes. S100P protein is widely expressed in both normal and neoplastic tissues. It clearly shows ectopic expression in some cancers. Based on the high expression in certain tumors, S100P could represent a potential target for novel diagnostic and therapeutic applications.

Storage

Storage:
Store at -80°C.

Storage Buffer:
PBS Only

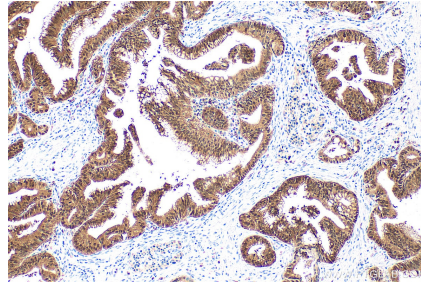
For technical support and original validation data for this product please contact:
T: 1 (888) 4PTGLAB (1-888-478-4522) (toll free in USA), or 1(312) 455-8498 (outside USA) E: proteintech@ptglab.com
W: ptglab.com

This product is exclusively available under Proteintech Group brand and is not available to purchase from any other manufacturer.

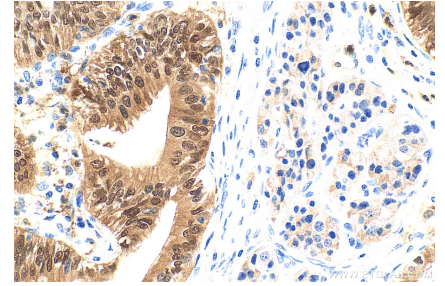
Selected Validation Data



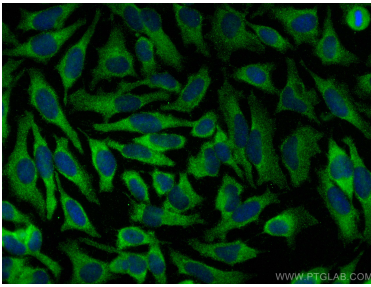
BXPC-3 cells were subjected to SDS PAGE followed by western blot with 67485-1-Ig (S100P antibody) at dilution of 1:3000 incubated at room temperature for 1.5 hours. This data was developed using the same antibody clone with 67485-1-PBS in a different storage buffer formulation.



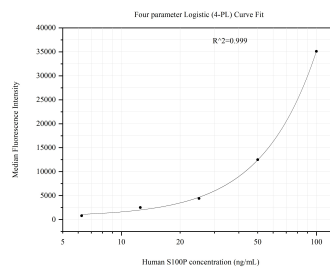
Immunohistochemical analysis of paraffin-embedded human pancreas cancer tissue slide using 67485-1-Ig (S100P antibody) at dilution of 1:8000 (under 10x lens). Heat mediated antigen retrieval with Tris-EDTA buffer (pH 9.0). This data was developed using the same antibody clone with 67485-1-PBS in a different storage buffer formulation.



Immunohistochemical analysis of paraffin-embedded human pancreas cancer tissue slide using 67485-1-Ig (S100P antibody) at dilution of 1:8000 (under 40x lens). Heat mediated antigen retrieval with Tris-EDTA buffer (pH 9.0). This data was developed using the same antibody clone with 67485-1-PBS in a different storage buffer formulation.



Immunofluorescent analysis of (-20°C Methanol) fixed HeLa cells using S100P antibody (67485-1-Ig, Clone: 1G6C3) at dilution of 1:800 and CoraLite®488-Conjugated AffiniPure Goat Anti-Mouse IgG(H+L). This data was developed using the same antibody clone with 67485-1-PBS in a different storage buffer formulation.



Cytometric bead array standard curve of MP51168-2, S100P Monoclonal Matched Antibody Pair, PBS Only. Capture antibody: 67485-1-PBS. Detection antibody: 67485-4-PBS. Standard: Ag19115. Range: 6.25-100 ng/mL.