

For Research Use Only

MIS12 Monoclonal antibody, PBS Only



Catalog Number: 67475-1-PBS

Basic Information

Catalog Number: 67475-1-PBS	GenBank Accession Number: BC000229	Purification Method: Protein A purification
Size: 100ug , Concentration: 1 mg/ml by Nanodrop;	GeneID (NCBI): 79003	CloneNo.: 2G5F6
Source: Mouse	UNIPROT ID: Q9H081	
Isotype: IgG2a	Full Name: MIS12, MIND kinetochore complex component, homolog (yeast)	
Immunogen Catalog Number: AG16826	Calculated MW: 205 aa, 24 kDa	
	Observed MW: 25 kDa	

Applications

Tested Applications:
WB, Indirect ELISA

Species Specificity:
Human

Storage

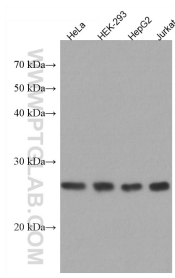
Storage:
Store at -80°C.

Storage Buffer:
PBS Only

For technical support and original validation data for this product please contact:
T: 1 (888) 4PTGLAB (1-888-478-4522) (toll free in USA), or 1(312) 455-8498 (outside USA) E: proteintech@ptglab.com W: ptglab.com

This product is exclusively available under Proteintech Group brand and is not available to purchase from any other manufacturer.

Selected Validation Data



Various lysates were subjected to SDS PAGE followed by western blot with 67475-1-Ig (MIS12 antibody) at dilution of 1:3000 incubated at room temperature for 1.5 hours. This data was developed using the same antibody clone with 67475-1-PBS in a different storage buffer formulation.