

For Research Use Only

MGME1 Monoclonal antibody, PBS Only



Catalog Number: 67468-1-PBS

Featured Product

Basic Information

Catalog Number:

67468-1-PBS

Size:

100ug, Concentration: 1 mg/ml by Nanodrop;

Source:

Mouse

Isotype:

IgG1

Immunogen Catalog Number:

AG19644

GenBank Accession Number:

BC016869

GeneID (NCBI):

92667

UNIPROT ID:

Q9BQP7

Full Name:

chromosome 20 open reading frame

72

Calculated MW:

344 aa, 39 kDa

Observed MW:

36-39 kDa

Purification Method:

Protein A purification

CloneNo.:

2C4G1

Applications

Tested Applications:

WB, IHC, Indirect ELISA

Species Specificity:

Human

Storage

Storage:

Store at -80°C.

Storage Buffer:

PBS Only

For technical support and original validation data for this product please contact:

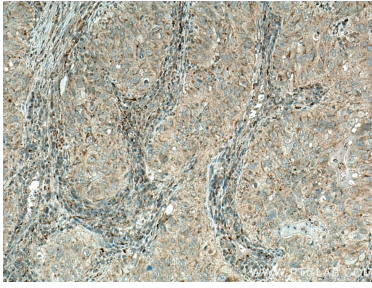
T: 1 (888) 4PTGLAB (1-888-478-4522) (toll free in USA), or 1(312) 455-8498 (outside USA)

E: proteintech@ptglab.com

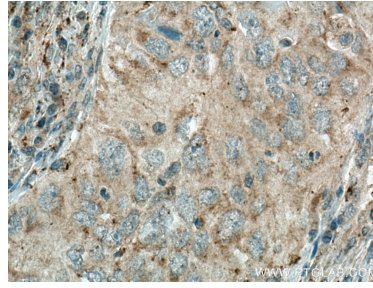
W: ptglab.com

This product is exclusively available under Proteintech Group brand and is not available to purchase from any other manufacturer.

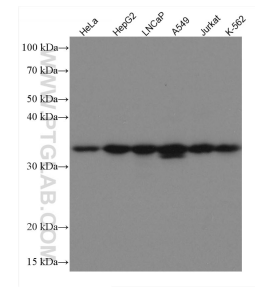
Selected Validation Data



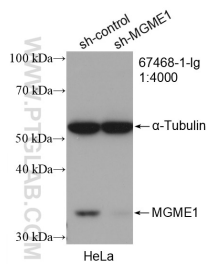
Immunohistochemical analysis of paraffin-embedded human lung cancer tissue slide using 67468-1-Ig (MGME1 antibody) at dilution of 1:300 (under 10x lens). Heat mediated antigen retrieval with Tris-EDTA buffer (pH 9.0). This data was developed using the same antibody clone with 67468-1-PBS in a different storage buffer formulation.



Immunohistochemical analysis of paraffin-embedded human lung cancer tissue slide using 67468-1-Ig (MGME1 antibody) at dilution of 1:300 (under 40x lens). Heat mediated antigen retrieval with Tris-EDTA buffer (pH 9.0). This data was developed using the same antibody clone with 67468-1-PBS in a different storage buffer formulation.



Various lysates were subjected to SDS PAGE followed by western blot with 67468-1-Ig (MGME1 antibody) at dilution of 1:5000 incubated at room temperature for 1.5 hours. This data was developed using the same antibody clone with 67468-1-PBS in a different storage buffer formulation.



WB result of MGME1 antibody (67468-1-Ig; 1:4000; incubated at room temperature for 1.5 hours) with sh-Control and sh-MGME1 transfected HeLa cells. This data was developed using the same antibody clone with 67468-1-PBS in a different storage buffer formulation.