

For Research Use Only

SLC25A12 Monoclonal antibody, PBS Only (Detector)

Catalog Number: 67467-1-PBS



Basic Information

Catalog Number: 67467-1-PBS	GenBank Accession Number: BC016932	Purification Method: Protein A purification
Size: 100ug, Concentration: 1mg/ml by Nanodrop;	GeneID (NCBI): 8604	CloneNo.: 1F2B10
Source: Mouse	UNIPROT ID: O75746	
Isotype: IgG1	Full Name: solute carrier family 25 (mitochondrial carrier, Aralar), member 12	
Immunogen Catalog Number: AG13576	Calculated MW: 75 kDa, 63 kDa	
	Observed MW: 70-75 kDa	

Applications

Tested Applications:
WB, IHC, Cytometric bead array, Indirect ELISA

Species Specificity:
human, mouse

Product Information

67467-1-PBS targets SLC25A12 as part of a matched antibody pair:

MP50650-2: 67467-4-PBS capture and 67467-1-PBS detection (validated in Cytometric bead array)

Unconjugated mouse monoclonal antibody pair in PBS only (BSA and azide free) storage buffer at a concentration of 1 mg/mL, ready for conjugation.

This conjugation ready format makes antibodies ideal for use in many applications including: ELISAs, multiplex assays requiring matched pairs, mass cytometry, and multiplex imaging applications. Antibody use should be optimized by the end user for each application and assay.

Storage

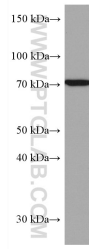
Storage:
Store at -80°C.

Storage Buffer:
PBS Only

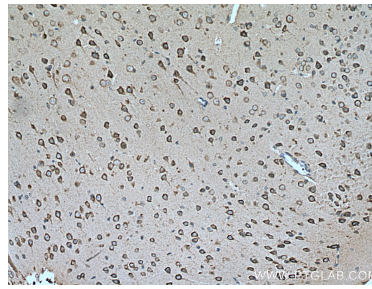
For technical support and original validation data for this product please contact:
T: 1 (888) 4PTGLAB (1-888-478-4522) (toll free in USA), or 1(312) 455-8498 (outside USA) E: proteintech@ptglab.com
W: ptglab.com

This product is exclusively available under Proteintech Group brand and is not available to purchase from any other manufacturer.

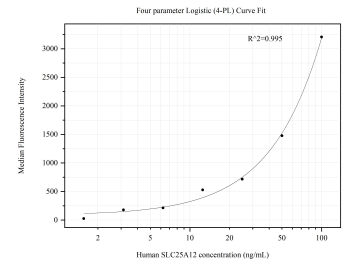
Selected Validation Data



LNCaP cells were subjected to SDS PAGE followed by western blot with 67467-1-Ig (SLC25A12 antibody) at dilution of 1:3000 incubated at room temperature for 1.5 hours. This data was developed using the same antibody clone with 67467-1-PBS in a different storage buffer formulation.



Immunohistochemical analysis of paraffin-embedded mouse brain tissue slide using 67467-1-Ig (SLC25A12 antibody) at dilution of 1:300 (under 10x lens). Heat mediated antigen retrieval with Tris-EDTA buffer (pH 9.0). This data was developed using the same antibody clone with 67467-1-PBS in a different storage buffer formulation.



Cytometric bead array standard curve of MP50650-2, SLC25A12 Monoclonal Matched Antibody Pair, PBS Only. Capture antibody: 67467-4-PBS. Detection antibody: 67467-1-PBS. Standard: Ag13576. Range: 1.563-100 ng/mL.