

For Research Use Only

# NAT10 Monoclonal antibody

Catalog Number: 67465-1-Ig **Featured Product**



## Basic Information

**Catalog Number:**

67465-1-Ig

**Size:**

150ul , Concentration: 800 µg/ml by Nanodrop and 500 µg/ml by Bradford method using BSA as the standard;

**Source:**

Mouse

**Isotype:**

IgG2a

**Immunogen Catalog Number:**

AG4355

**GenBank Accession Number:**

BC035558

**GeneID (NCBI):**

55226

**UNIPROT ID:**

Q9H0A0

**Full Name:**

N-acetyltransferase 10 (GCN5-related)

**Calculated MW:**

1025 aa, 116 kDa

**Observed MW:**

116 kDa

**Purification Method:**

Protein A purification

**CloneNo.:**

3E3D8

**Recommended Dilutions:**

WB 1:5000-1:50000

## Applications

**Tested Applications:**

WB, ELISA

**Species Specificity:**

Human, mouse, rat

**Positive Controls:**

WB : LNCaP cells, A549 cells, HeLa cells, HepG2 cells, Jurkat cells, K-562 cells, HSC-T6 cells, PC-12 cells, NIH/3T3 cells, Neuro-2a cells

## Background Information

NAT10 (N-acetyltransferase 10) is a nucleolar protein that is involved in regulation of telomerase activity, DNA damage response, and cytokinesis. It also plays a role in maintaining nuclear shape. Inhibition of NAT10 has been reported to rescue the misshapen nuclei in laminopathic cells via microtubule reorganization.

## Storage

**Storage:**

Store at -20°C.

**Storage Buffer:**

PBS with 0.02% sodium azide and 50% glycerol pH 7.3.

Aliquoting is unnecessary for -20°C storage

\*\*\* 20ul sizes contain 0.1% BSA

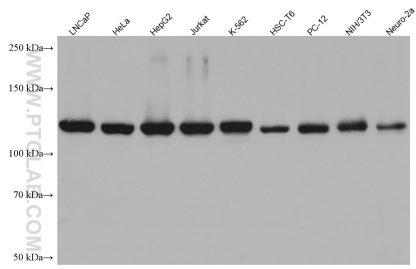
For technical support and original validation data for this product please contact:

T: 1 (888) 4PTGLAB (1-888-478-4522) (toll free in USA), or 1(312) 455-8498 (outside USA)

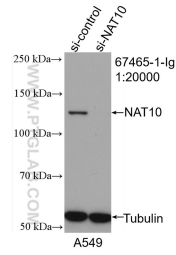
E: [proteintech@ptglab.com](mailto:proteintech@ptglab.com)  
W: [ptglab.com](http://ptglab.com)

**This product is exclusively available under Proteintech Group brand and is not available to purchase from any other manufacturer.**

## Selected Validation Data



Various lysates were subjected to SDS PAGE followed by western blot with 67465-1-Ig (NAT10 antibody) at dilution of 1:10000 incubated at room temperature for 1.5 hours.



WB result of NAT10 antibody (67465-1-Ig; 1:20000; incubated at room temperature for 1.5 hours) with sh-Control and sh-NAT10 transfected A549 cells.