

For Research Use Only

OMA1 Monoclonal antibody, PBS Only (Detector)

Catalog Number: 67449-1-PBS



Basic Information

| | | |
|---|--|---|
| Catalog Number: 67449-1-PBS | GenBank Accession Number: BC012915 | Purification Method: Protein G purification |
| Size: 100ug, Concentration: 1mg/ml by Nanodrop; | GeneID (NCBI): 115209 | CloneNo.: 1H4D12 |
| Source: Mouse | UNIPROT ID: Q96E52 | |
| Isotype: IgG1 | Full Name: OMA1 homolog, zinc metallopeptidase (S. cerevisiae) | |
| Immunogen Catalog Number: AG11201 | Calculated MW: 524 aa, 60 kDa | |
| | Observed MW: 60 kDa | |

Applications

Tested Applications:
WB, Cytometric bead array, Indirect ELISA

Species Specificity:
human, mouse

Product Information

67449-1-PBS targets OMA1 as part of a matched antibody pair:

MP50571-3: 66572-1-PBS capture and 67449-1-PBS detection (validated in Cytometric bead array)

Unconjugated mouse monoclonal antibody pair in PBS only (BSA and azide free) storage buffer at a concentration of 1 mg/mL, ready for conjugation.

This conjugation ready format makes antibodies ideal for use in many applications including: ELISAs, multiplex assays requiring matched pairs, mass cytometry, and multiplex imaging applications. Antibody use should be optimized by the end user for each application and assay.

Background Information

OMA1 (Overlapping with the m-AAA protease 1 homolog) is also named as MPRP1 (Metalloprotease-related protein 1) and belongs to the peptidase M48 family. It is a zinc metalloprotease that spans the inner mitochondrial membrane with a number of predicted membrane spanning domains and the 60 kDa form of OMA1 rapidly accumulated concomitantly with the cleavage of all OPA1 variants, and the 40 kDa form of OMA1 may be the inactive form, with the 60 kDa form being the active enzyme (PMID:20334834)

Storage

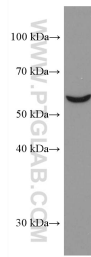
Storage:
Store at -80°C.

Storage Buffer:
PBS Only

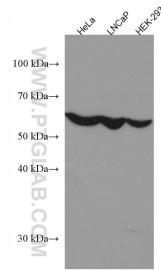
For technical support and original validation data for this product please contact:
T: 1 (888) 4PTGLAB (1-888-478-4522) (toll free in USA), or 1(312) 455-8498 (outside USA)
E: proteintech@ptglab.com
W: ptglab.com

This product is exclusively available under Proteintech Group brand and is not available to purchase from any other manufacturer.

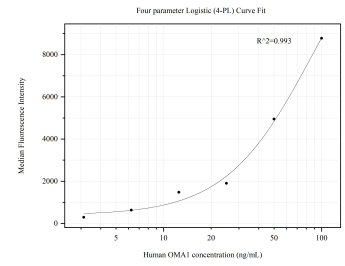
Selected Validation Data



NIH/3T3 cells were subjected to SDS PAGE followed by western blot with 67449-1-Ig (OMA1 antibody) at dilution of 1:3000 incubated at room temperature for 1.5 hours. This data was developed using the same antibody clone with 67449-1-PBS in a different storage buffer formulation.



Various lysates were subjected to SDS PAGE followed by western blot with 67449-1-Ig (OMA1 antibody) at dilution of 1:3000 incubated at room temperature for 1.5 hours. This data was developed using the same antibody clone with 67449-1-PBS in a different storage buffer formulation.



Cytometric bead array standard curve of MP50571-3, OMA1 Monoclonal Matched Antibody Pair, PBS Only. Capture antibody: 66572-1-PBS. Detection antibody: 67449-1-PBS. Standard: Ag11201. Range: 3.125-100 ng/mL