

For Research Use Only

# BDH1 Monoclonal antibody, PBS Only

Catalog Number: 67448-1-PBS



## Basic Information

Catalog Number:

67448-1-PBS

Size:

100ug, Concentration: 1mg/ml by Nanodrop;

Source:

Mouse

Isotype:

IgG1

Immunogen Catalog Number:

AG7864

GenBank Accession Number:

BC005844

GeneID (NCBI):

622

UNIPROT ID:

Q02338

Full Name:

3-hydroxybutyrate dehydrogenase, type 1

Calculated MW:

38 kDa

Observed MW:

31 kDa

Purification Method:

Protein A purification

CloneNo.:

2C3D4

## Applications

Tested Applications:

WB, IHC, IF-P, ELISA

Species Specificity:

Human, Mouse, Rat, Pig

## Background Information

BDH1 (3-hydroxybutyrate dehydrogenase, type 1) is a 343 amino acid protein that localizes to the mitochondrial matrix and belongs to the short-chain dehydrogenases/reductases (SDR) family. The deduced 343 amino acid protein contains a 46 residue leader peptide, which is cleaved to produce the mature form. It is a lipid-requiring mitochondrial enzyme with a specific requirement of phosphatidylcholine (PC).

## Storage

Storage:

Store at -80°C.

Storage Buffer:

PBS Only

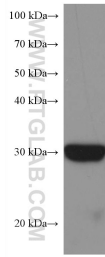
For technical support and original validation data for this product please contact:

T: 1 (888) 4PTGLAB (1-888-478-4522) (toll free in USA), or 1(312) 455-8498 (outside USA)

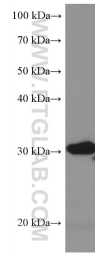
E: [proteintech@ptglab.com](mailto:proteintech@ptglab.com)  
W: [ptglab.com](http://ptglab.com)

**This product is exclusively available under Proteintech Group brand and is not available to purchase from any other manufacturer.**

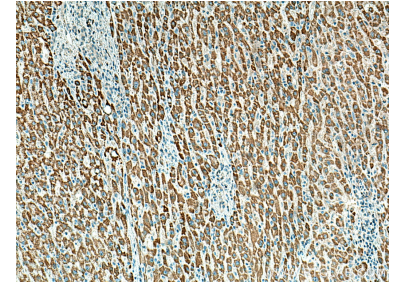
## Selected Validation Data



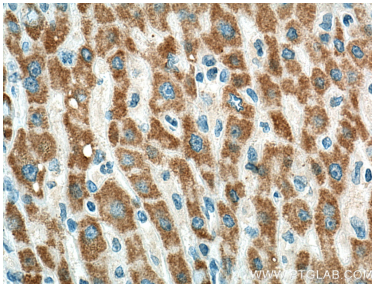
pig liver tissue were subjected to SDS PAGE followed by western blot with 67448-1-Ig (BDH1 antibody) at dilution of 1:5000 incubated at room temperature for 1.5 hours. This data was developed using the same antibody clone with 67448-1-PBS in a different storage buffer formulation.



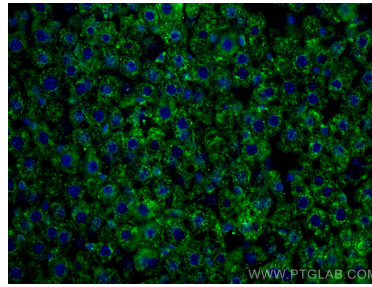
HSC-T6 cells were subjected to SDS PAGE followed by western blot with 67448-1-Ig (BDH1 antibody) at dilution of 1:5000 incubated at room temperature for 1.5 hours. This data was developed using the same antibody clone with 67448-1-PBS in a different storage buffer formulation.



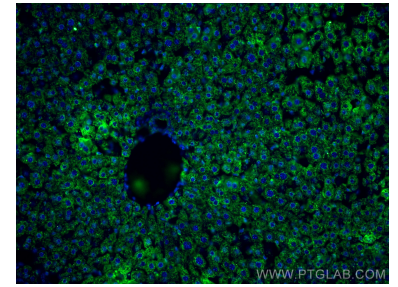
Immunohistochemical analysis of paraffin-embedded human liver cancer tissue slide using 67448-1-Ig (BDH1 antibody) at dilution of 1:1000 (under 10x lens). Heat mediated antigen retrieval with Tris-EDTA buffer (pH 9.0). This data was developed using the same antibody clone with 67448-1-PBS in a different storage buffer formulation.



Immunohistochemical analysis of paraffin-embedded human liver cancer tissue slide using 67448-1-Ig (BDH1 antibody) at dilution of 1:1000 (under 40x lens). Heat mediated antigen retrieval with Tris-EDTA buffer (pH 9.0). This data was developed using the same antibody clone with 67448-1-PBS in a different storage buffer formulation.



Immunofluorescent analysis of (4% PFA) fixed mouse liver tissue using BDH1 antibody (67448-1-Ig, Clone: 2C3D4) at dilution of 1:400 and Coralite@488-Conjugated Goat Anti-Mouse IgG(H+L). This data was developed using the same antibody clone with 67448-1-PBS in a different storage buffer formulation.



Immunofluorescent analysis of (4% PFA) fixed mouse liver tissue using BDH1 antibody (67448-1-Ig, Clone: 2C3D4) at dilution of 1:400 and Coralite@488-Conjugated Goat Anti-Mouse IgG(H+L). This data was developed using the same antibody clone with 67448-1-PBS in a different storage buffer formulation.