

For Research Use Only

# BDH1 Monoclonal antibody

Catalog Number: 67448-1-Ig

Featured Product

3 Publications



## Basic Information

<b>Catalog Number:</b> 67448-1-Ig	<b>GenBank Accession Number:</b> BC005844	<b>Purification Method:</b> Protein A purification
<b>Size:</b> 150ul , Concentration: 2100 µg/ml by Nanodrop and 1000 µg/ml by Bradford method using BSA as the standard;	<b>GeneID (NCBI):</b> 622	<b>CloneNo.:</b> 2C3D4
<b>Source:</b> Mouse	<b>UNIPROT ID:</b> Q02338	<b>Recommended Dilutions:</b> WB 1:2000-1:10000 IHC 1:500-1:2000 IF-P 1:200-1:800
<b>Isotype:</b> IgG1	<b>Full Name:</b> 3-hydroxybutyrate dehydrogenase, type 1	
<b>Immunogen Catalog Number:</b> AG7864	<b>Calculated MW:</b> 38 kDa	
	<b>Observed MW:</b> 31 kDa	

## Applications

### Tested Applications:

WB, IHC, IF-P, ELISA

### Cited Applications:

WB, IHC

### Species Specificity:

Human, Mouse, Rat, Pig

### Cited Species:

human, mouse

**Note-IHC: suggested antigen retrieval with TE buffer pH 9.0; (\*) Alternatively, antigen retrieval may be performed with citrate buffer pH 6.0**

### Positive Controls:

WB : pig liver tissue, HSC-T6 cells, HepG2 cells, HT-29 cells, COLO 320 cells

IHC : human liver cancer tissue,

IF-P: mouse liver tissue,

## Background Information

BDH1 (3-hydroxybutyrate dehydrogenase, type 1) is a 343 amino acid protein that localizes to the mitochondrial matrix and belongs to the short-chain dehydrogenases/reductases (SDR) family. The deduced 343 amino acid protein contains a 46 residue leader peptide, which is cleaved to produce the mature form. It is a lipid-requiring mitochondrial enzyme with a specific requirement of phosphatidylcholine (PC).

## Notable Publications

Author	Pubmed ID	Journal	Application
Yi NA Dong	36016708	PNAS Nexus	WB
Faith C Kaluba	39554134	bioRxiv	WB
Jingjing Huang	38098610	MedComm (2020)	WB,IHC

## Storage

### Storage:

Store at -20°C. Stable for one year after shipment.

### Storage Buffer:

PBS with 0.02% sodium azide and 50% glycerol pH 7.3.

Aliquoting is unnecessary for -20°C storage

\*\*\* 20ul sizes contain 0.1% BSA

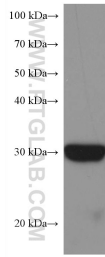
For technical support and original validation data for this product please contact:

T: 1 (888) 4PTGLAB (1-888-478-4522) (toll free in USA), or 1(312) 455-8498 (outside USA)

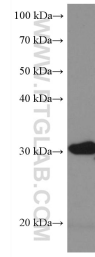
E: proteintech@ptglab.com  
W: ptglab.com

This product is exclusively available under Proteintech Group brand and is not available to purchase from any other manufacturer.

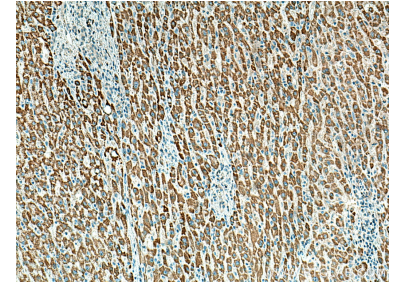
## Selected Validation Data



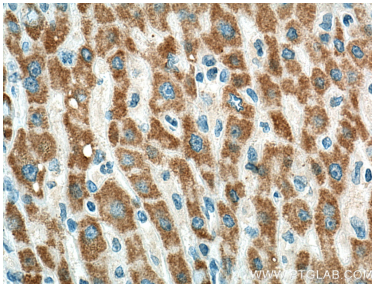
pig liver tissue were subjected to SDS PAGE followed by western blot with 67448-1-Ig (BDH1 antibody) at dilution of 1:5000 incubated at room temperature for 1.5 hours.



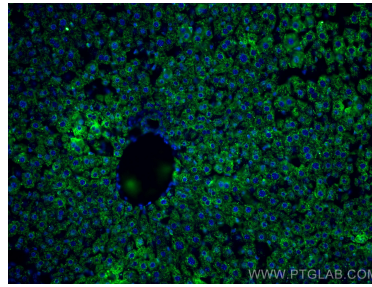
HSC-T6 cells were subjected to SDS PAGE followed by western blot with 67448-1-Ig (BDH1 antibody) at dilution of 1:5000 incubated at room temperature for 1.5 hours.



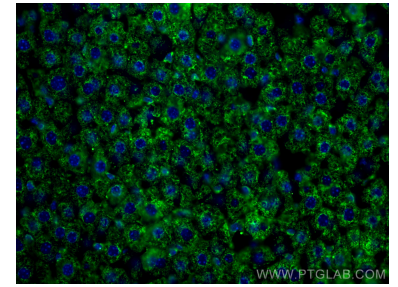
Immunohistochemical analysis of paraffin-embedded human liver cancer tissue slide using 67448-1-Ig (BDH1 antibody) at dilution of 1:1000 (under 10x lens). Heat mediated antigen retrieval with Tris-EDTA buffer (pH 9.0).



Immunohistochemical analysis of paraffin-embedded human liver cancer tissue slide using 67448-1-Ig (BDH1 antibody) at dilution of 1:1000 (under 40x lens). Heat mediated antigen retrieval with Tris-EDTA buffer (pH 9.0).



Immunofluorescent analysis of (4% PFA) fixed mouse liver tissue using BDH1 antibody (67448-1-Ig, Clone: 2C3D4) at dilution of 1:400 and CoraLite®488-Conjugated Goat Anti-Mouse IgG(H+L).



Immunofluorescent analysis of (4% PFA) fixed mouse liver tissue using BDH1 antibody (67448-1-Ig, Clone: 2C3D4) at dilution of 1:400 and CoraLite®488-Conjugated Goat Anti-Mouse IgG(H+L).