

For Research Use Only

MYC Monoclonal antibody, PBS Only (Capture)

Catalog Number: 67447-4-PBS



Basic Information

Catalog Number: 67447-4-PBS	GenBank Accession Number: BC000141	Purification Method: Protein G purification
Size: 100ug, Concentration: 1 mg/ml by Nanodrop;	GeneID (NCBI): 4609	CloneNo.: 1G7G1
Source: Mouse	UNIPROT ID: P01106	
Isotype: IgG1	Full Name: v-myc myelocytomatosis viral oncogene homolog (avian)	
Immunogen Catalog Number: AG17519	Calculated MW: 49 kDa	

Applications

Tested Applications:
Cytometric bead array, Sandwich ELISA, Indirect ELISA,
Sample test

Species Specificity:
human

Product Information

67447-4-PBS targets MYC as part of a matched antibody pair:

MP50347-2: 67447-4-PBS capture and 67447-5-PBS detection (validated in Cytometric bead array, Sandwich ELISA)

Unconjugated mouse monoclonal antibody pair in PBS only (BSA and azide free) storage buffer at a concentration of 1 mg/mL, ready for conjugation.

This conjugation ready format makes antibodies ideal for use in many applications including: ELISAs, multiplex assays requiring matched pairs, mass cytometry, and multiplex imaging applications. Antibody use should be optimized by the end user for each application and assay.

Storage

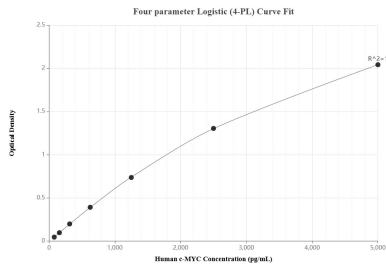
Storage:
Store at -80°C.

Storage Buffer:
PBS Only

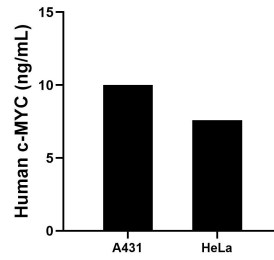
For technical support and original validation data for this product please contact:
T: 1 (888) 4PTGLAB (1-888-478-4522) (toll free in USA), or 1(312) 455-8498 (outside USA) E: proteintech@ptglab.com
W: ptglab.com

This product is exclusively available under Proteintech Group brand and is not available to purchase from any other manufacturer.

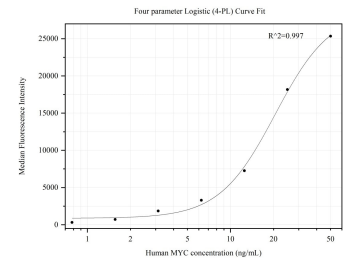
Selected Validation Data



Sandwich ELISA standard curve of MP50347-2, Human c-MYC Monoclonal Matched Antibody Pair - PBS only. 67447-4-PBS was coated to a plate as the capture antibody and incubated with serial dilutions of standard Ag17519. 67447-5-PBS was HRP conjugated as the detection antibody. Range: 0.781-50 ng/mL



The mean c-MYC concentration was determined to be 10.0 ng/mL in A431 cell extract based on a 1.5 mg/mL extract load and 7.6 ng/mL in HeLa cell extract based on a 1.5 mg/mL extract load.



Cytometric bead array standard curve of MP50347-2, MYC Monoclonal Matched Antibody Pair, PBS Only. Capture antibody: 67447-4-PBS. Detection antibody: 67447-5-PBS. Standard: Ag17519. Range: 0.781-50 ng/mL