

For Research Use Only

MCM7 Monoclonal antibody, PBS Only



Catalog Number: 67446-1-PBS

Basic Information

Catalog Number: 67446-1-PBS	GenBank Accession Number: BC013375	Purification Method: Protein G purification
Size: 100ug , Concentration: 1 mg/ml by Nanodrop;	GeneID (NCBI): 4176	CloneNo.: 1G1F6
Source: Mouse	UNIPROT ID: P33993	
Isotype: IgG1	Full Name: minichromosome maintenance complex component 7	
Immunogen Catalog Number: AG28558	Calculated MW: 81 kDa	
	Observed MW: 85 kDa	

Applications

Tested Applications:
WB, IP, IHC, Indirect ELISA

Species Specificity:
Human, mouse, rat

Background Information

MCM7, also named as CDC47 homolog or P1.1-MCM3, is a 719 amino acid protein, which belongs to the MCM family. MCM7 acts as component of the MCM2-7 complex (MCM complex) which is the putative replicative helicase essential for 'once per cell cycle' DNA replication initiation and elongation in eukaryotic cells. the MCM2-7 complex participates in the pre-replication complex formation and exhibits helicase activity which makes DNA unwind, and resulting in recruitment of DNA polymerases and initiation of DNA replication and elongation [PMID: 29463213]. An immunohistochemical study has shown that MCM7 is increased in HCC. Silencing of MCM7 with shRNA inhibits the malignant behavior of HCC cells via cell cycle arrest and apoptosis [[PMID: 29463213].

Storage

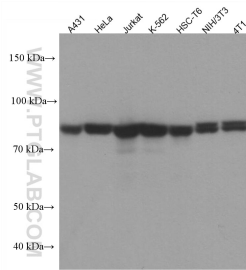
Storage:
Store at -80°C.

Storage Buffer:
PBS Only

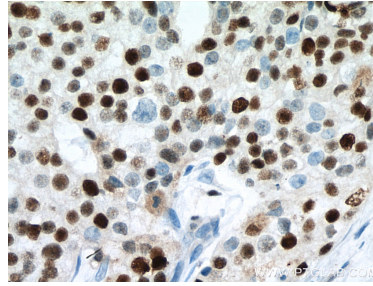
For technical support and original validation data for this product please contact:
T: 1 (888) 4PTGLAB (1-888-478-4522) (toll free in USA), or 1(312) 455-8498 (outside USA) E: proteintech@ptglab.com
W: ptglab.com

This product is exclusively available under Proteintech Group brand and is not available to purchase from any other manufacturer.

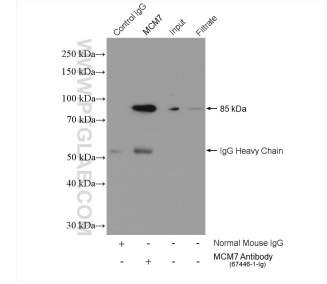
Selected Validation Data



Various lysates were subjected to SDS PAGE followed by western blot with 67446-1-Ig (MCM7 antibody) at dilution of 1:20000 incubated at room temperature for 1.5 hours. This data was developed using the same antibody clone with 67446-1-PBS in a different storage buffer formulation.



Immunohistochemical analysis of paraffin-embedded human breast cancer tissue slide using 67446-1-Ig (MCM7 antibody) at dilution of 1:2000 (under 40x lens). Heat mediated antigen retrieval with Tris-EDTA buffer (pH 9.0). This data was developed using the same antibody clone with 67446-1-PBS in a different storage buffer formulation.



IP result of anti-MCM7 (IP:67446-1-Ig, 4ug; Detection:67446-1-Ig 1:2000) with HeLa cells lysate 1040 ug. This data was developed using the same antibody clone with 67446-1-PBS in a different storage buffer formulation.