

For Research Use Only

MTH1 Monoclonal antibody, PBS Only (Capture)

Catalog Number: 67443-1-PBS



Basic Information

Catalog Number: 67443-1-PBS	GenBank Accession Number: BC014618	Purification Method: Protein A purification
Size: 100ug, Concentration: 1mg/ml by Nanodrop;	GeneID (NCBI): 4521	CloneNo.: 2D7G4
Source: Mouse	UNIPROT ID: P36639	
Isotype: IgG1	Full Name: nudix (nucleoside diphosphate linked moiety X)-type motif 1	
Immunogen Catalog Number: AG9802	Calculated MW: 179aa,20 kDa; 197aa,23 kDa	
	Observed MW: 19 kDa	

Applications

Tested Applications:
WB, IHC, Cytometric bead array, Indirect ELISA

Species Specificity:
human, mouse

Product Information

67443-1-PBS targets MTH1 as part of a matched antibody pair:

MP50783-2: 67443-1-PBS capture and 67443-4-PBS detection (validated in Cytometric bead array)

Unconjugated mouse monoclonal antibody pair in PBS only (BSA and azide free) storage buffer at a concentration of 1 mg/mL, ready for conjugation.

This conjugation ready format makes antibodies ideal for use in many applications including: ELISAs, multiplex assays requiring matched pairs, mass cytometry, and multiplex imaging applications. Antibody use should be optimized by the end user for each application and assay.

Background Information

MTH1, also known as NUDT1 or 8-Oxo-dGTPase, is an important repair enzyme that prevents oxidative stress-induced DNA damage through hydrolyzing mutagenic 8-oxo-dGTP into 8-oxo-dGMP. MTH1 is expressed in postmitotic neurons as well as in proliferative tissues, and it is localized both in the mitochondria and nucleus. MTH1 might be a useful marker of oxidative stress and its level increased upon oxidative stress. Increased expression of MTH1 were also found in various cancer tissues and neurodegenerative diseases.

Storage

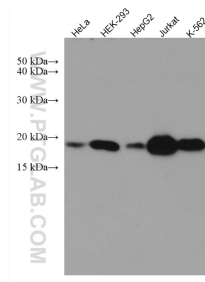
Storage:
Store at -80°C.

Storage Buffer:
PBS Only

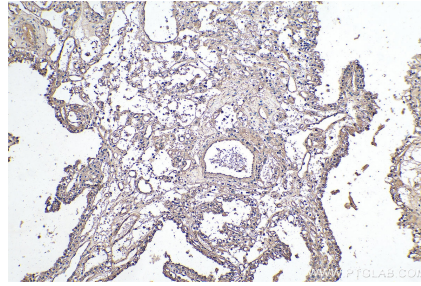
For technical support and original validation data for this product please contact:
T: 1 (888) 4PTGLAB (1-888-478-4522) (toll free in USA), or 1(312) 455-8498 (outside USA) E: proteintech@ptglab.com
W: ptglab.com

This product is exclusively available under Proteintech Group brand and is not available to purchase from any other manufacturer.

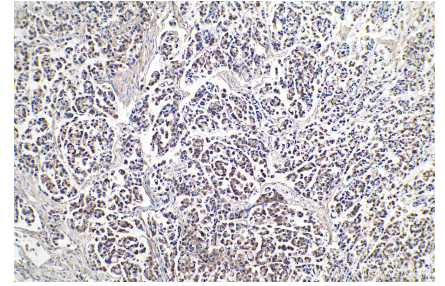
Selected Validation Data



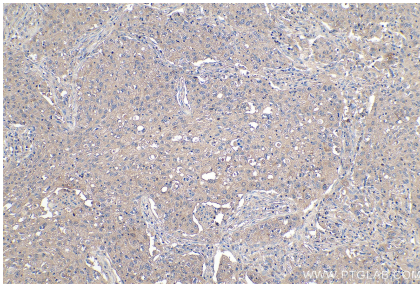
Various lysates were subjected to SDS PAGE followed by western blot with 67443-1-Ig (MTH1 antibody) at dilution of 1:5000 incubated at room temperature for 1.5 hours. This data was developed using the same antibody clone with 67443-1-PBS in a different storage buffer formulation.



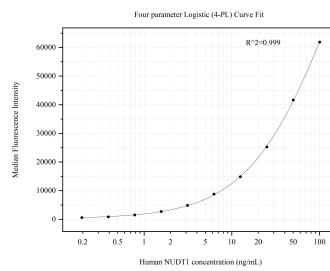
Immunohistochemical analysis of paraffin-embedded human renal cell carcinoma tissue slide using 67443-1-Ig (MTH1 antibody) at dilution of 1:4000 (under 10x lens). Heat mediated antigen retrieval with Tris-EDTA buffer (pH 9.0). This data was developed using the same antibody clone with 67443-1-PBS in a different storage buffer formulation.



Immunohistochemical analysis of paraffin-embedded human colon cancer tissue slide using 67443-1-Ig (MTH1 antibody) at dilution of 1:4000 (under 10x lens). Heat mediated antigen retrieval with Tris-EDTA buffer (pH 9.0). This data was developed using the same antibody clone with 67443-1-PBS in a different storage buffer formulation.



Immunohistochemical analysis of paraffin-embedded human lung cancer tissue slide using 67443-1-Ig (MTH1 antibody) at dilution of 1:4000 (under 10x lens). Heat mediated antigen retrieval with Tris-EDTA buffer (pH 9.0). This data was developed using the same antibody clone with 67443-1-PBS in a different storage buffer formulation.



Cytometric bead array standard curve of MP50783-2, NUDT1 Monoclonal Matched Antibody Pair, PBS Only. Capture antibody: 67443-1-PBS. Detection antibody: 67443-4-PBS. Standard: Ag9802. Range: 0.195-100 ng/mL.