

For Research Use Only

# MESDC2 Monoclonal antibody, PBS Only



Catalog Number: 67441-1-PBS

## Basic Information

Catalog Number:

67441-1-PBS

Size:

100ug, Concentration: 1 mg/ml by Nanodrop;

Source:

Mouse

Isotype:

IgG2a

Immunogen Catalog Number:

AG1403

GenBank Accession Number:

BC009210

GeneID (NCBI):

23184

UNIPROT ID:

Q14696

Full Name:

mesoderm development candidate 2

Calculated MW:

26 kDa

Observed MW:

26 kDa

Purification Method:

Protein A purification

CloneNo.:

1A2E7

## Applications

Tested Applications:

WB, IF, IHC, Indirect ELISA

Species Specificity:

Human

## Storage

Storage:

Store at -80°C.

Storage Buffer:

PBS Only

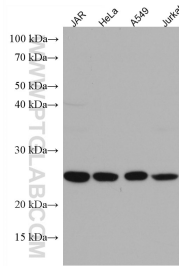
For technical support and original validation data for this product please contact:

T: 1 (888) 4PTGLAB (1-888-478-4522) (toll free in USA), or 1(312) 455-8498 (outside USA)

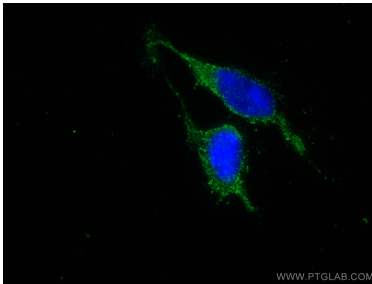
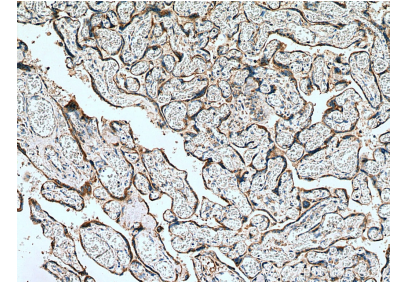
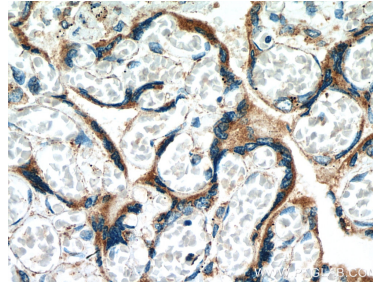
E: [proteintech@ptglab.com](mailto:proteintech@ptglab.com)  
W: [ptglab.com](http://ptglab.com)

This product is exclusively available under Proteintech Group brand and is not available to purchase from any other manufacturer.

## Selected Validation Data



Various lysates were subjected to SDS PAGE followed by western blot with 67441-1-Ig (MESDC2 antibody) at dilution of 1:2000 incubated at room temperature for 1.5 hours. This data was developed using the same antibody clone with 67441-1-PBS in a different storage buffer formulation.



Immunofluorescent analysis of (-20°C Ethanol) fixed HEK-293 cells using MESDC2 antibody (67441-1-Ig, Clone: 1A2E7) at dilution of 1:400 and CoraLite@488-Conjugated AffiniPure Goat Anti-Mouse IgG(H+L). This data was developed using the same antibody clone with 67441-1-PBS in a different storage buffer formulation.