

For Research Use Only

PPM1D Monoclonal antibody, PBS Only



Catalog Number: 67440-1-PBS

Basic Information

Catalog Number: 67440-1-PBS	GenBank Accession Number: BC060877	Purification Method: Protein G purification
Size: 100ug , Concentration: 1 mg/ml by Nanodrop;	GeneID (NCBI): 8493	CloneNo.: 2D6D5
Source: Mouse	UNIPROT ID: O15297	
Isotype: IgG1	Full Name: protein phosphatase 1D magnesium-dependent, delta isoform	
Immunogen Catalog Number: AG24761	Observed MW: 67 kDa, 47 kDa	

Applications

Tested Applications:
WB, IF, IHC, Indirect ELISA

Species Specificity:
Human, Mouse, Rat, Pig

Background Information

PPM1D (also known as PP2Cd and WIP1) is a member of the PPM family, which is characterized by Mg²⁺/Mn²⁺-dependent activity and relative insensitivity to okadaic acid. The PPM1D gene is aberrantly amplified in a range of common cancers and encodes a protein phosphatase that is a potential therapeutic target (PMID: 17700519). This antibody can be detected two bands of 47 and 67 Kda.

Storage

Storage:
Store at -80°C.
Storage Buffer:
PBS Only

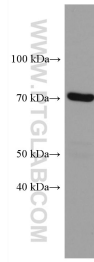
For technical support and original validation data for this product please contact:

T: 1 (888) 4PTGLAB (1-888-478-4522) (toll free in USA), or 1(312) 455-8498 (outside USA)

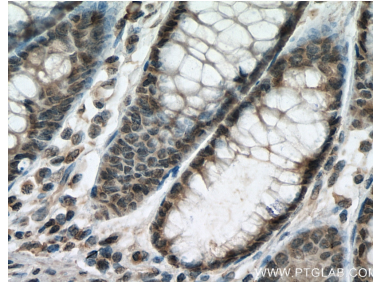
E: proteintech@ptglab.com
W: ptglab.com

This product is exclusively available under Proteintech Group brand and is not available to purchase from any other manufacturer.

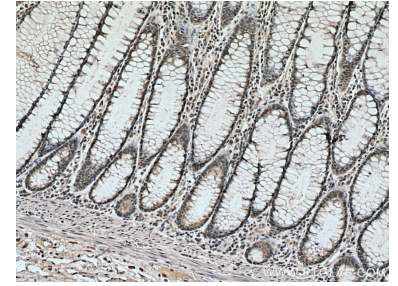
Selected Validation Data



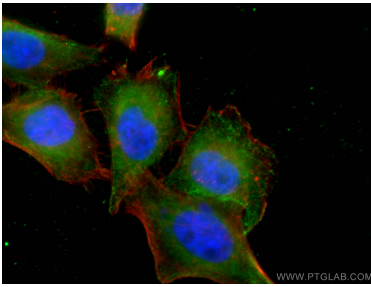
MCF-7 cells were subjected to SDS PAGE followed by western blot with 67440-1-Ig (PPM1D antibody) at dilution of 1:5000 incubated at room temperature for 1.5 hours. This data was developed using the same antibody clone with 67440-1-PBS in a different storage buffer formulation.



Immunohistochemical analysis of paraffin-embedded human colon cancer tissue slide using 67440-1-Ig (PPM1D antibody) at dilution of 1:200 (under 40x lens). Heat mediated antigen retrieval with Tris-EDTA buffer (pH 9.0). This data was developed using the same antibody clone with 67440-1-PBS in a different storage buffer formulation.



Immunohistochemical analysis of paraffin-embedded human colon cancer tissue slide using 67440-1-Ig (PPM1D antibody) at dilution of 1:200 (under 10x lens). Heat mediated antigen retrieval with Tris-EDTA buffer (pH 9.0). This data was developed using the same antibody clone with 67440-1-PBS in a different storage buffer formulation.



Immunofluorescent analysis of (4% PFA) fixed HepG2 cells using 67440-1-Ig (PPM1D antibody), at dilution of 1:200 and CoraLite®488-Conjugated AffiniPure Goat Anti-Mouse IgG(H+L). This data was developed using the same antibody clone with 67440-1-PBS in a different storage buffer formulation.