

For Research Use Only

CYP20A1 Monoclonal antibody, PBS Only



Catalog Number: 67433-1-PBS

Basic Information

Catalog Number:

67433-1-PBS

Size:

100ug, Concentration: 1 mg/ml by Nanodrop;

Source:

Mouse

Isotype:

IgG1

Immunogen Catalog Number:

AG9715

GenBank Accession Number:

BC020616

GeneID (NCBI):

57404

UNIPROT ID:

Q6UW02

Full Name:

cytochrome P450, family 20, subfamily A, polypeptide 1

Calculated MW:

462 aa, 52 kDa

Observed MW:

49-52 kDa

Purification Method:

Protein G purification

CloneNo.:

2A9E2

Applications

Tested Applications:

WB, IF, IHC, Indirect ELISA

Species Specificity:

Human, Mouse, Rat

Storage

Storage:

Store at -80°C.

Storage Buffer:

PBS Only

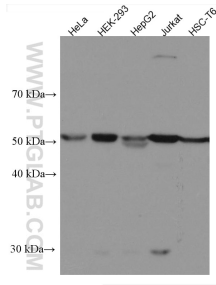
For technical support and original validation data for this product please contact:

T: 1 (888) 4PTGLAB (1-888-478-4522) (toll free in USA), or 1(312) 455-8498 (outside USA)

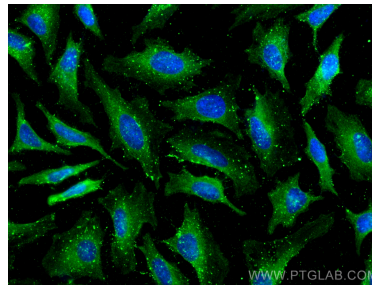
E: proteintech@ptglab.com
W: ptglab.com

This product is exclusively available under Proteintech Group brand and is not available to purchase from any other manufacturer.

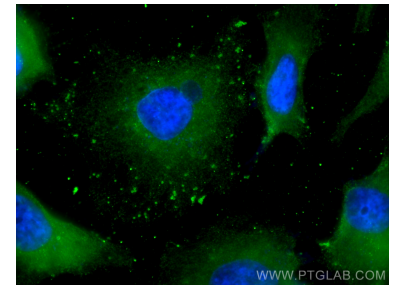
Selected Validation Data



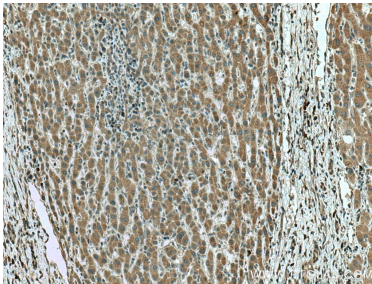
Various lysates were subjected to SDS PAGE followed by western blot with 67433-1-Ig (CYP20A1 antibody) at dilution of 1:5000 incubated at room temperature for 1.5 hours. This data was developed using the same antibody clone with 67433-1-PBS in a different storage buffer formulation.



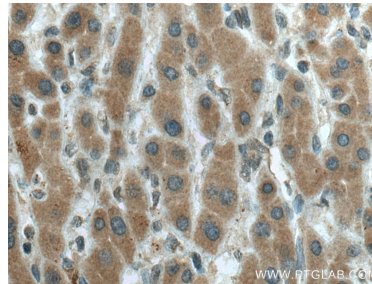
Immunofluorescent analysis of (-20°C Methanol) fixed HeLa cells using CYP20A1 antibody (67433-1-Ig, Clone: 2A9E2) at dilution of 1:400 and CoraLite®488-Conjugated AffiniPure Goat Anti-Mouse IgG(H+L). This data was developed using the same antibody clone with 67433-1-PBS in a different storage buffer formulation.



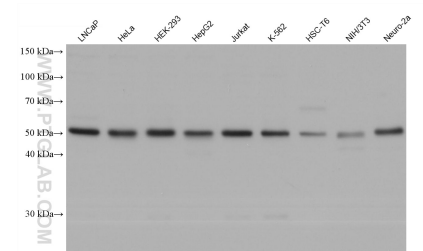
Immunofluorescent analysis of (-20°C Methanol) fixed HeLa cells using CYP20A1 antibody (67433-1-Ig, Clone: 2A9E2) at dilution of 1:400 and CoraLite®488-Conjugated AffiniPure Goat Anti-Mouse IgG(H+L). This data was developed using the same antibody clone with 67433-1-PBS in a different storage buffer formulation.



Immunohistochemical analysis of paraffin-embedded human liver cancer tissue slide using 67433-1-Ig (CYP20A1 antibody) at dilution of 1:500 (under 10x lens). Heat mediated antigen retrieval with Tris-EDTA buffer (pH 9.0). This data was developed using the same antibody clone with 67433-1-PBS in a different storage buffer formulation.



Immunohistochemical analysis of paraffin-embedded human liver cancer tissue slide using 67433-1-Ig (CYP20A1 antibody) at dilution of 1:500 (under 40x lens). Heat mediated antigen retrieval with Tris-EDTA buffer (pH 9.0). This data was developed using the same antibody clone with 67433-1-PBS in a different storage buffer formulation.



Various lysates were subjected to SDS PAGE followed by western blot with 67433-1-Ig (CYP20A1 antibody) at dilution of 1:20000 incubated at room temperature for 1.5 hours. This data was developed using the same antibody clone with 67433-1-PBS in a different storage buffer formulation.