

For Research Use Only

TTPA Monoclonal antibody, PBS Only

Catalog Number: 67431-1-PBS



Basic Information

Catalog Number: 67431-1-PBS	GenBank Accession Number: BC058000	Purification Method: Protein A purification
Size: 100ug, Concentration: 1 mg/ml by Nanodrop;	GeneID (NCBI): 7274	CloneNo.: 3E7D10
Source: Mouse	UNIPROT ID: P49638	
Isotype: IgG2b	Full Name: tocopherol (alpha) transfer protein	
Immunogen Catalog Number: AG13587	Calculated MW: 32 kDa	
	Observed MW: 32 kDa	

Applications

Tested Applications:
WB, IF, IHC, Indirect ELISA

Species Specificity:
Human, Mouse, Rat, Pig

Storage

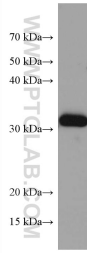
Storage:
Store at -80°C.

Storage Buffer:
PBS Only

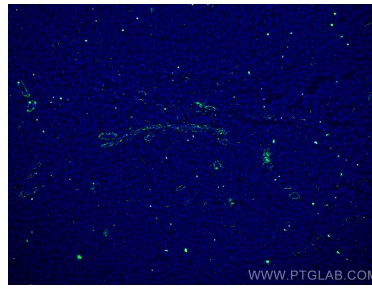
For technical support and original validation data for this product please contact:
T: 1 (888) 4PTGLAB (1-888-478-4522) (toll free in USA), or 1(312) 455-8498 (outside USA) E: proteintech@ptglab.com
W: ptglab.com

This product is exclusively available under Proteintech Group brand and is not available to purchase from any other manufacturer.

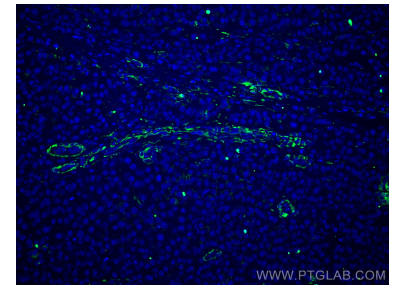
Selected Validation Data



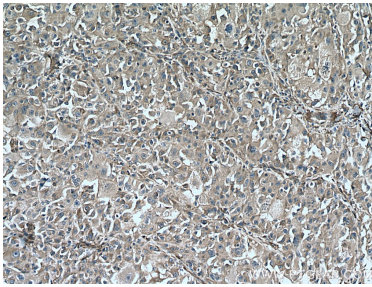
rat liver tissue were subjected to SDS PAGE followed by western blot with 67431-1-Ig (TTPA antibody) at dilution of 1:10000 incubated at room temperature for 1.5 hours. This data was developed using the same antibody clone with 67431-1-PBS in a different storage buffer formulation.



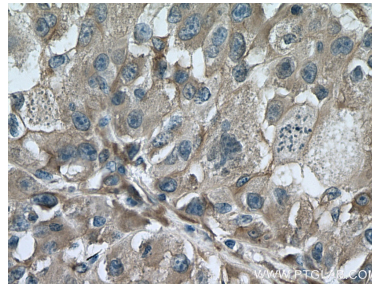
Immunofluorescent analysis of (4% PFA) fixed human liver cancer tissue using TTPA antibody (67431-1-Ig, Clone: 3E7D10) at dilution of 1:400 and CoraLite®488-Conjugated AffiniPure Goat Anti-Mouse IgG(H+L). This data was developed using the same antibody clone with 67431-1-PBS in a different storage buffer formulation.



Immunofluorescent analysis of (4% PFA) fixed human liver cancer tissue using TTPA antibody (67431-1-Ig, Clone: 3E7D10) at dilution of 1:400 and CoraLite®488-Conjugated AffiniPure Goat Anti-Mouse IgG(H+L). This data was developed using the same antibody clone with 67431-1-PBS in a different storage buffer formulation.



Immunohistochemical analysis of paraffin-embedded human liver cancer tissue slide using 67431-1-Ig (TTPA antibody) at dilution of 1:1000 (under 10x lens). Heat mediated antigen retrieval with Tris-EDTA buffer (pH 9.0). This data was developed using the same antibody clone with 67431-1-PBS in a different storage buffer formulation.



Immunohistochemical analysis of paraffin-embedded human liver cancer tissue slide using 67431-1-Ig (TTPA antibody) at dilution of 1:1000 (under 40x lens). Heat mediated antigen retrieval with Tris-EDTA buffer (pH 9.0). This data was developed using the same antibody clone with 67431-1-PBS in a different storage buffer formulation.