

For Research Use Only

AMPD2 Monoclonal antibody, PBS Only



Catalog Number: 67430-1-PBS

Basic Information

Catalog Number: 67430-1-PBS	GenBank Accession Number: BC007711	Purification Method: Protein A purification
Size: 100ug , Concentration: 1 mg/ml by Nanodrop;	GeneID (NCBI): 271	CloneNo.: 2C4C1
Source: Mouse	UNIPROT ID: Q01433	
Isotype: IgG2b	Full Name: adenosine monophosphate deaminase 2 (isoform L)	
Immunogen Catalog Number: AG8433	Calculated MW: 879aa,101 kDa; 798aa,92 kDa	
	Observed MW: 101 kDa	

Applications

Tested Applications:
WB, IF, IHC, Indirect ELISA

Species Specificity:
Human, Mouse, Rat

Background Information

Adenosine monophosphate deaminase (AMPD) catalyzes the deamination of AMP to IMP and plays an important role in the purine nucleotide cycle. Three AMPDs are present in mammals named AMPD1/2/3. AMPD2 is the main activity present in adult human liver and is widely expressed in non-muscle tissues and cells (PMID: 8526848). AMPD2 has some isoforms with the molecular mass of 88-101 kDa.

Storage

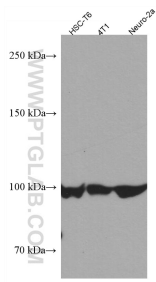
Storage:
Store at -80°C.

Storage Buffer:
PBS Only

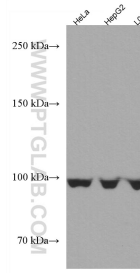
For technical support and original validation data for this product please contact:
T: 1 (888) 4PTGLAB (1-888-478-4522) (toll free in USA), or 1(312) 455-8498 (outside USA) E: proteintech@ptglab.com
W: ptglab.com

This product is exclusively available under Proteintech Group brand and is not available to purchase from any other manufacturer.

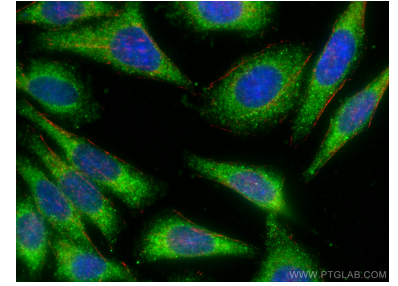
Selected Validation Data



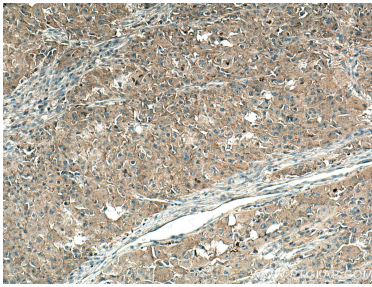
HSC-T6 cells were subjected to SDS PAGE followed by western blot with 67430-1-Ig (AMPD2 antibody) at dilution of 1:10000 incubated at room temperature for 1.5 hours. This data was developed using the same antibody clone with 67430-1-PBS in a different storage buffer formulation.



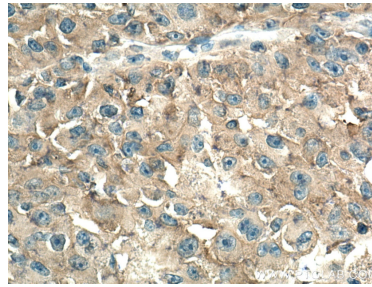
Various lysates were subjected to SDS PAGE followed by western blot with 67430-1-Ig (AMPD2 antibody) at dilution of 1:10000 incubated at room temperature for 1.5 hours. This data was developed using the same antibody clone with 67430-1-PBS in a different storage buffer formulation.



Immunofluorescent analysis of (-20°C Ethanol) fixed HepG2 cells using AMPD2 antibody (67430-1-Ig, Clone: 2C4C1) at dilution of 1:400 and CoraLite®488-Conjugated AffiniPure Goat Anti-Mouse IgG(H+L), CL594-Phalloidin (red). This data was developed using the same antibody clone with 67430-1-PBS in a different storage buffer formulation.



Immunohistochemical analysis of paraffin-embedded human liver cancer tissue slide using 67430-1-Ig (AMPD2 antibody) at dilution of 1:1000 (under 10x lens). Heat mediated antigen retrieval with Tris-EDTA buffer (pH 9.0). This data was developed using the same antibody clone with 67430-1-PBS in a different storage buffer formulation.



Immunohistochemical analysis of paraffin-embedded human liver cancer tissue slide using 67430-1-Ig (AMPD2 antibody) at dilution of 1:1000 (under 40x lens). Heat mediated antigen retrieval with Tris-EDTA buffer (pH 9.0). This data was developed using the same antibody clone with 67430-1-PBS in a different storage buffer formulation.