

For Research Use Only

RBM39 Monoclonal antibody

Catalog Number:67420-1-Ig



Basic Information

Catalog Number: 67420-1-Ig	GenBank Accession Number: BC141835	Purification Method: Protein A purification
Size: 150ul , Concentration: 1000 ug/ml by Nanodrop and 483 ug/ml by Bradford method using BSA as the standard;	GeneID (NCBI): 9584	CloneNo.: 2D2C8
Source: Mouse	UNIPROT ID: Q14498	Recommended Dilutions: WB 1:5000-1:50000 IHC 1:150-1:600 IF/ICC 1:50-1:500
Isotype: IgG2b	Full Name: RNA binding motif protein 39	
Immunogen Catalog Number: AG15766	Calculated MW: 530 aa, 59 kDa	
	Observed MW: 60-66 kDa	

Applications

Tested Applications:
WB, IHC, IF/ICC, ELISA

Species Specificity:
Human, mouse, rat

Note-IHC: suggested antigen retrieval with TE buffer pH 9.0; (*) Alternatively, antigen retrieval may be performed with citrate buffer pH 6.0

Positive Controls:

WB : Caco-2 cells, HeLa cells, LNCaP cells, HEK-293 cells, HepG2 cells, Jurkat cells, HSC-T6 cells, NIH/3T3 cells, Neuro-2a cells

IHC : human breast cancer tissue,

IF/ICC : HepG2 cells,

Background Information

RBM39, also named as HCC1 or RNPC2, is a 530 amino acid protein, which contains three RRM (RNA recognition motif) domains and belongs to the splicing factor SR family. RBM39 is widely expressed in various tissues and with highly expression in pancreas, skeletal muscle, lung and brain. RBM39 is a transcriptional coactivator for steroid nuclear receptors ESR1/ER-alpha and ESR2/ER-beta, and JUN/AP-1. RBM39 may be involved in pre-mRNA splicing process.

Storage

Storage:

Store at -20°C. Stable for one year after shipment.

Storage Buffer:

PBS with 0.02% sodium azide and 50% glycerol pH 7.3.

Aliquoting is unnecessary for -20°C storage

*** 20ul sizes contain 0.1% BSA

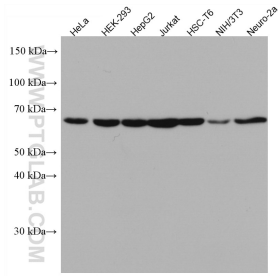
For technical support and original validation data for this product please contact:

T: 1 (888) 4PTGLAB (1-888-478-4522) (toll free in USA), or 1(312) 455-8498 (outside USA)

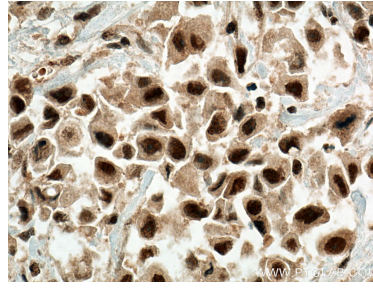
E: proteintech@ptglab.com
W: ptglab.com

This product is exclusively available under Proteintech Group brand and is not available to purchase from any other manufacturer.

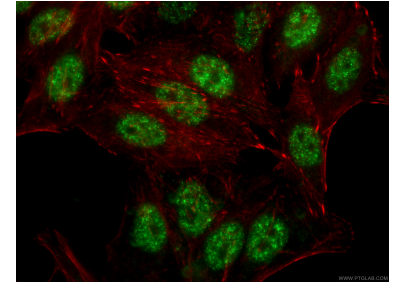
Selected Validation Data



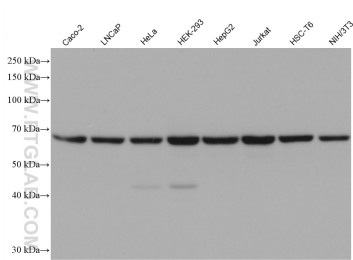
Various lysates were subjected to SDS PAGE followed by western blot with 67420-1-Ig (RBM39 antibody) at dilution of 1:2500 incubated at room temperature for 1.5 hours.



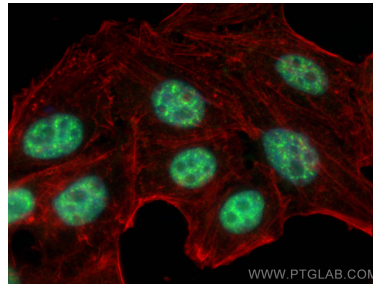
Immunohistochemical analysis of paraffin-embedded human breast cancer tissue slide using 67420-1-Ig (RBM39 antibody) at dilution of 1:300 (under 40x lens). Heat mediated antigen retrieval with Tris-EDTA buffer (pH 9.0).



Immunofluorescent analysis of (-20°C Ethanol) fixed HepG2 cells using 67420-1-Ig (RBM39 antibody), at dilution of 1:200 and CoraLite® 488-Conjugated AffiniPure Goat Anti-Mouse IgG(H+L).



Various lysates were subjected to SDS PAGE followed by western blot with 67420-1-Ig (RBM39 antibody) at dilution of 1:10000 incubated at room temperature for 1.5 hours.



Immunofluorescent analysis of (4% PFA) fixed HepG2 cells using RBM39 antibody (67420-1-Ig, Clone: 2D2C8) at dilution of 1:2000 and CoraLite® 488-Conjugated AffiniPure Goat Anti-Mouse IgG(H+L), CL594-phalloidin (red).